

CONTACT: Bureau of Workforce Statistics
and Economic Research
(850) 245-7205

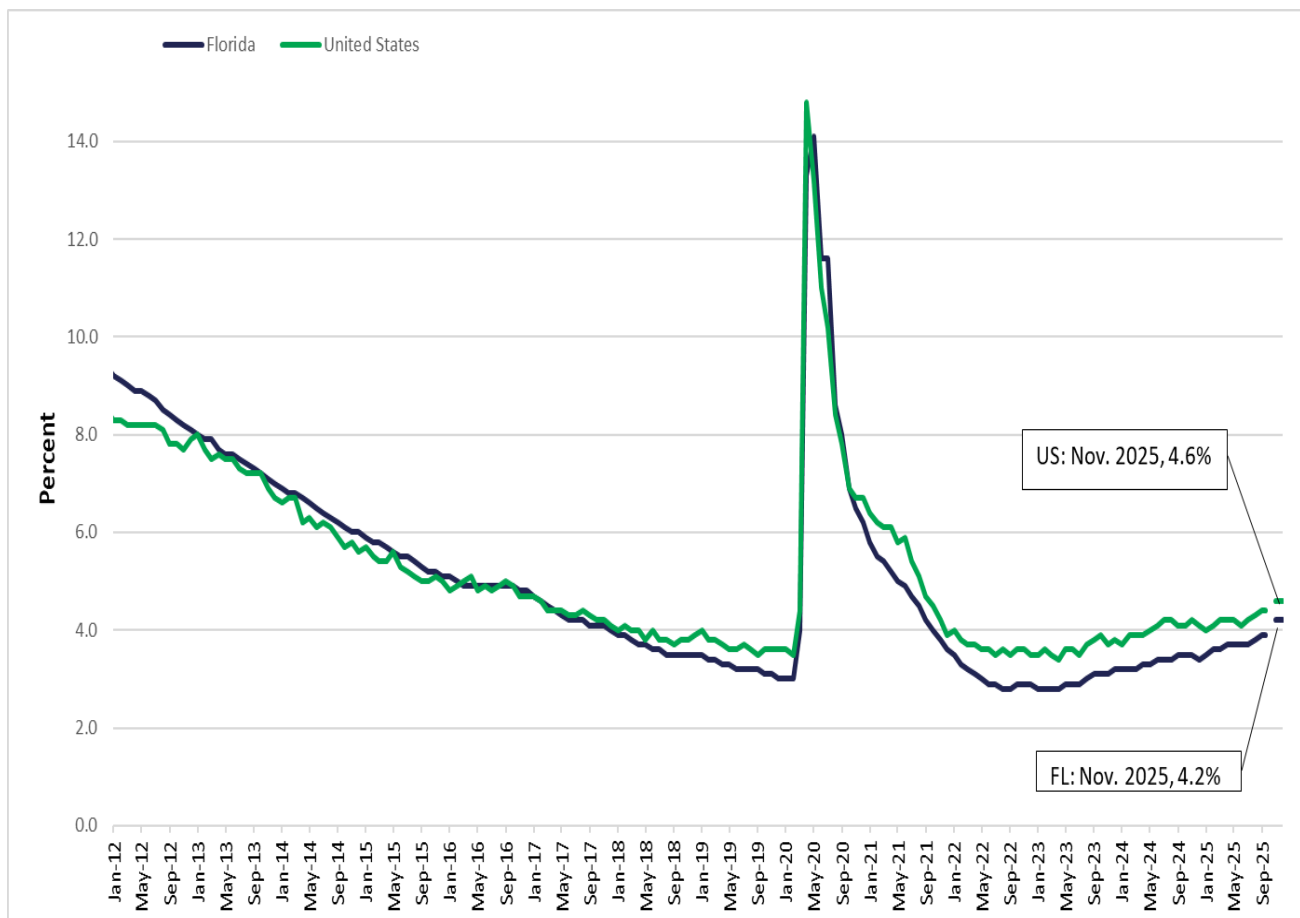
Florida's November Figures Released

Note: Unemployment and labor force statistics for October 2025 are not available due to a lapse in federal data collection activities.

Florida's seasonally adjusted unemployment rate was 4.2 percent in November 2025, up 0.3 percentage point from the September 2025 rate, and up 0.7 percentage point from a year ago. There were 466,000 jobless Floridians out of a labor force of 11,209,000. The U.S. seasonally adjusted unemployment rate was 4.6 percent in November.

Florida's seasonally adjusted total nonagricultural employment was 10,047,900 in November 2025, a decrease of 300 jobs (less than -0.1 percent) over the month. The state gained 75,300 jobs over the year, an increase of 0.8 percent. Nationally, the number of jobs rose 0.6 percent over the year.

United States and Florida Unemployment Rates (seasonally adjusted)



Source: U.S. Department of Labor, Bureau of Labor Statistics, Local Area Unemployment Statistics Program, in cooperation with the Florida Department of Commerce, Bureau of Workforce Statistics and Economic Research.

Florida's Nonagricultural Employment by Industry (Seasonally Adjusted)

- Seven of ten major industries experienced positive over-the-year job growth in November.
- The industries gaining jobs over the year included education and health services (+49,000 jobs, +3.2 percent); trade, transportation, and utilities (+18,300 jobs, +0.9 percent); total government (+5,200 jobs, +0.4 percent); information (+4,400 jobs, +2.8 percent); financial activities (+2,900 jobs, +0.4 percent); professional and business services (+2,100 jobs, +0.1 percent); and other services (+400 jobs, +0.1 percent).
- The industries losing jobs over the year included construction (-4,600 jobs, -0.7 percent); manufacturing (-1,700 jobs, -0.4 percent); and leisure and hospitality (-700 jobs, -0.1 percent).

Local Area Unemployment Statistics (Not Seasonally Adjusted)

- In November 2025, Miami-Dade County had the state's lowest unemployment rate (3.2 percent), followed by Monroe County (3.6 percent), and Wakulla County (4.5 percent).
- Taylor County had the highest unemployment rate (9.4 percent) in Florida in November 2025, followed by Sumter County (8.9 percent), and Citrus County (7.5 percent).

Area Nonagricultural Employment (Not Seasonally Adjusted)

- In November 2025, 17 of all 25 metro areas in Florida had over-the-year job gains. The areas with the largest gains were the Tampa MD (+15,000 jobs, +1.4 percent), followed by the Jacksonville MSA (+10,500 jobs, +1.3 percent), and the West Palm Beach-Boca Raton-Delray Beach MD (+9,600 jobs, +1.4 percent).
- Six metro areas in Florida lost jobs over the year in November 2025. The areas losing jobs were the Tallahassee MSA (-1,600 jobs, -0.8 percent), the Panama City-Panama City Beach MSA (-1,400 jobs, -1.5 percent), the Crestview-Fort Walton Beach-Destin MSA (-1,000 jobs, -0.8 percent), the Pensacola-Ferry Pass-Brent MSA (-500 jobs, -0.2 percent), the Sebring MSA (-300 jobs, -1.0 percent), and the Sebastian-Vero Beach MSA (-100 jobs, -0.2 percent).
- The Homosassa Springs MSA and the Wildwood-The Villages MSA were unchanged in jobs over the year.

The unemployment and job growth rates are estimates, which are primarily based on surveys created and mandated by the U.S. Bureau of Labor Statistics in cooperation with the Florida Department of Commerce.

The unemployment rate is derived from Florida household surveys conducted by the U.S. Census Bureau under contract with the U.S. Bureau of Labor Statistics. The job growth rate is derived from Florida employer surveys conducted by the U.S. Bureau of Labor Statistics.

Both estimates are revised on a monthly basis. In addition, these estimates are benchmarked (revised) annually based on actual counts from Florida's Reemployment Assistance tax records and other data.

Procedures mandated by the U.S. Bureau of Labor Statistics may result in more variable month-to-month changes. For further information, go to: <https://www.bls.gov/sae/>

The mission of the Florida Department of Commerce is to promote economic prosperity for all Floridians and businesses through successful workforce, community, and economic development strategies. Please visit www.floridajobs.org for more information.

Labor market data for December 2025 will be released on January 23, 2026, at 10:00 A.M.

LABOR FORCE STATUS OF THE CIVILIAN NONINSTITUTIONAL POPULATION
RELEASE DATE: JANUARY 07, 2026

SEASONALLY ADJUSTED

	Current Month November 2025	Month Ago October 2025	Year Ago November 2024	Over-the-Month Change		Over-the-Year Change	
				Level	Percent	Level	Percent
STATE OF FLORIDA							
Civilian Noninstitutional							
Population 16+	19,482,000	-	19,210,000	-	-	272,000	1.4
Civilian Labor Force	11,209,000	-	11,169,000	-	-	40,000	0.4
Employment	10,743,000	-	10,783,000	-	-	-40,000	-0.4
Unemployment	466,000	-	386,000	-	-	80,000	20.7
Unemployment Rate (%)	4.2	-	3.5	-	-	0.7	

UNITED STATES

Civilian Noninstitutional Population 16+	274,633,000	-	269,463,000	-	-	5,170,000	1.9
Civilian Labor Force	171,571,000	-	168,304,000	-	-	3,267,000	1.9
Employment	163,741,000	-	161,183,000	-	-	2,558,000	1.6
Unemployment	7,831,000	-	7,121,000	-	-	710,000	10.0
Unemployment Rate (%)	4.6	-	4.2	-	-	0.4	--

NOT SEASONALLY ADJUSTED

	Current Month November 2025	Month Ago October 2025	Year Ago November 2024	Over-the-Month Change		Over-the-Year Change	
				Level	Percent	Level	Percent
				STATE OF FLORIDA			
Civilian Noninstitutional							
Population 16+	19,482,000	-	19,210,000	-	-	272,000	1.4
Civilian Labor Force	11,223,000	-	11,121,000	-	-	102,000	0.9
Employment	10,667,000	-	10,732,000	-	-	-65,000	-0.6
Unemployment	555,000	-	389,000	-	-	166,000	42.7
Unemployment Rate (%)	4.9	-	3.5	-	-	1.4	--

UNITED STATES

Civilian Noninstitutional Population 16+	274,633,000	-	269,463,000	-	-	5,170,000	1.9
Civilian Labor Force	171,467,000	-	168,164,000	-	-	3,303,000	2.0
Employment	164,066,000	-	161,456,000	-	-	2,610,000	1.6
Unemployment	7,401,000	-	6,708,000	-	-	693,000	10.3
Unemployment Rate (%)	4.3	-	4.0	-	-	0.3	--

Note: Unemployment and labor force statistics for October 2025 are not available due to a lapse in federal data collection activities.

Note: All estimates except unemployment rates are rounded to the nearest thousand. Items may not add to totals or compute to displayed percentages due to rounding. All data are subject to revision.

Source: U.S. Department of Labor, Bureau of Labor Statistics, Local Area Unemployment Statistics Program, in cooperation with the Florida Department of Commerce, Bureau of Workforce Statistics and Economic Research.

Nonagricultural Employment in Florida Seasonally Adjusted

	November ^p 2025	October ^r 2025	November 2024	Over-the-Month Change		Over-the-Year Change	
				Level	Percent	Level	Percent
Total Nonagricultural Employment	10,047,900	10,048,200	9,972,600	-300	*	75,300	0.8%
Total Private	8,877,600	8,877,800	8,807,500	-200	*	70,100	0.8%
Goods Producing	1,082,700	1,086,600	1,089,000	-3,900	-0.4%	-6,300	-0.6%
Mining, Logging, and Construction	655,200	657,200	659,800	-2,000	-0.3%	-4,600	-0.7%
Construction	649,600	651,600	654,200	-2,000	-0.3%	-4,600	-0.7%
Manufacturing	427,500	429,400	429,200	-1,900	-0.4%	-1,700	-0.4%
Durable Goods	298,500	299,500	294,800	-1,000	-0.3%	3,700	1.3%
Nondurable Goods	129,000	129,900	134,400	-900	-0.7%	-5,400	-4.0%
Service Producing	8,965,200	8,961,600	8,883,600	3,600	*	81,600	0.9%
Private Service Providing	7,794,900	7,791,200	7,718,500	3,700	*	76,400	1.0%
Trade, Transportation, and Utilities	2,020,800	2,019,400	2,002,500	1,400	0.1%	18,300	0.9%
Wholesale Trade	404,700	404,100	400,700	600	0.1%	4,000	1.0%
Retail Trade	1,166,900	1,168,000	1,159,100	-1,100	-0.1%	7,800	0.7%
Transportation, Warehousing, and Utilities	449,200	447,300	442,700	1,900	0.4%	6,500	1.5%
Information	160,000	158,400	155,600	1,600	1.0%	4,400	2.8%
Financial Activities	687,400	688,700	684,500	-1,300	-0.2%	2,900	0.4%
Finance and Insurance	462,000	463,900	466,100	-1,900	-0.4%	-4,100	-0.9%
Real Estate, Rental, and Leasing	225,400	224,800	218,400	600	0.3%	7,000	3.2%
Professional and Business Services	1,619,200	1,624,900	1,617,100	-5,700	-0.4%	2,100	0.1%
Professional and Technical Services	766,600	768,300	756,500	-1,700	-0.2%	10,100	1.3%
Management of Companies and Enterprises	142,000	142,800	138,100	-800	-0.6%	3,900	2.8%
Administrative and Waste Services	710,600	713,800	722,500	-3,200	-0.4%	-11,900	-1.6%
Education and Health Services	1,603,100	1,595,000	1,554,100	8,100	0.5%	49,000	3.2%
Educational Services	227,400	226,100	217,900	1,300	0.6%	9,500	4.4%
Health Care and Social Assistance	1,375,700	1,368,900	1,336,200	6,800	0.5%	39,500	3.0%
Leisure and Hospitality	1,321,800	1,321,100	1,322,500	700	0.1%	-700	-0.1%
Arts, Entertainment, and Recreation	270,800	268,900	268,600	1,900	0.7%	2,200	0.8%
Accommodation and Food Services	1,051,000	1,052,200	1,053,900	-1,200	-0.1%	-2,900	-0.3%
Other Services	382,600	383,700	382,200	-1,100	-0.3%	400	0.1%

Source: U.S. Department of Labor, Bureau of Labor Statistics, Current Employment Statistics Program.
Prepared by: Florida Department of Commerce, Bureau of Workforce Statistics and Economic Research.

Nonagricultural Employment in Florida Seasonally Adjusted

	November ^p 2025	October ^r 2025	November 2024	Over-the-Month Change		Over-the-Year Change	
				Level	Percent	Level	Percent
Total Government	1,170,300	1,170,400	1,165,100	-100	*	5,200	0.4%
Federal Government	152,900	153,300	162,300	-400	-0.3%	-9,400	-5.8%
State Government	257,000	257,500	256,500	-500	-0.2%	500	0.2%
Local Government	760,400	759,600	746,300	800	0.1%	14,100	1.9%

Released: January 07, 2026

p = preliminary, r = revised

* - less than 0.1 percent

Note: Sum of detail may not equal totals due to rounding or the exclusion of certain industries from publication. All data are subject to revision.

**NONAGRICULTURAL EMPLOYMENT IN FLORIDA
STATEWIDE (Not Seasonally Adjusted)**

Released January 07, 2026

Series	Industry Title	November 2025	October 2025	November 2024	Change from Oct 2025 to Nov 2025		Change from Nov 2024 to Nov 2025	
					Level	Percent	Level	Percent
00000000	Total Nonfarm	10,134,300	10,076,400	10,069,700	57,900	0.6%	64,600	0.6%
05000000	Total Private	8,941,700	8,883,400	8,882,400	58,300	0.7%	59,300	0.7%
06000000	Goods Producing	1,085,800	1,085,900	1,094,500	-100	*	-8,700	-0.8%
07000000	Service-Providing	9,048,500	8,990,500	8,975,200	58,000	0.6%	73,300	0.8%
08000000	Private Service Providing	7,855,900	7,797,500	7,787,900	58,400	0.7%	68,000	0.9%
10000000	Mining and Logging	5,600	5,600	5,600	0	0.0%	0	0.0%
10212000	Mining (except Oil and Gas)	3,400	3,400	3,400	0	0.0%	0	0.0%
15000000	Mining, Logging and Construction	657,400	658,600	663,900	-1,200	-0.2%	-6,500	-1.0%
20000000	Construction	651,800	653,000	658,300	-1,200	-0.2%	-6,500	-1.0%
20236000	Construction of Buildings	138,100	138,400	133,600	-300	-0.2%	4,500	3.4%
20237000	Heavy and Civil Engineering Construction	87,900	88,100	86,400	-200	-0.2%	1,500	1.7%
20238000	Specialty Trade Contractors	425,800	426,500	438,300	-700	-0.2%	-12,500	-2.9%
20238200	Building Equipment Contractors	187,700	188,600	193,300	-900	-0.5%	-5,600	-2.9%
30000000	Manufacturing	428,400	427,300	430,600	1,100	0.3%	-2,200	-0.5%
31000000	Durable Goods	299,400	298,300	295,800	1,100	0.4%	3,600	1.2%
31332000	Fabricated Metal Product Manufacturing	46,400	46,600	46,000	-200	-0.4%	400	0.9%
31334000	Computer and Electronic Product Manufacturing	48,400	48,300	47,600	100	0.2%	800	1.7%
31334200	Communications Equipment Manufacturing	5,400	5,400	5,300	0	0.0%	100	1.9%
31336000	Transportation Equipment Manufacturing	58,500	58,400	57,600	100	0.2%	900	1.6%
31336400	Aerospace Product and Parts Manufacturing	34,700	34,600	34,100	100	0.3%	600	1.8%
31339000	Miscellaneous Manufacturing	37,800	37,800	37,700	0	0.0%	100	0.3%
32000000	Non-Durable Goods	129,000	129,000	134,800	0	0.0%	-5,800	-4.3%
32311000	Food Manufacturing	38,500	38,400	40,100	100	0.3%	-1,600	-4.0%
32312000	Beverage and Tobacco Product Manufacturing	13,100	13,200	14,100	-100	-0.8%	-1,000	-7.1%
32322000	Paper Manufacturing	7,000	7,000	7,400	0	0.0%	-400	-5.4%
32323000	Printing and Related Support Activities	15,100	15,200	15,900	-100	-0.7%	-800	-5.0%
32325000	Chemical Manufacturing	28,400	28,400	29,200	0	0.0%	-800	-2.7%
40000000	Trade, Transportation, and Utilities	2,055,700	2,017,000	2,045,200	38,700	1.9%	10,500	0.5%
41000000	Wholesale Trade	405,800	405,600	400,400	200	*	5,400	1.3%
41423000	Merchant Wholesalers, Durable Goods	221,000	221,600	219,000	-600	-0.3%	2,000	0.9%
41423400	Professional and Commercial Equipment and Supplies Merchant Wholesalers	60,600	60,600	59,700	0	0.0%	900	1.5%
41423600	Household Appliances and Electrical and Electronic Goods Merchant Wholesalers	24,600	24,700	24,900	-100	-0.4%	-300	-1.2%
41423800	Machinery, Equipment, and Supplies Merchant Wholesalers	40,000	39,900	40,100	100	0.3%	-100	-0.2%
41424000	Merchant Wholesalers, Nondurable Goods	159,500	159,000	156,800	500	0.3%	2,700	1.7%
41424400	Grocery and Related Product Merchant Wholesalers	64,000	63,900	63,500	100	0.2%	500	0.8%
41425000	Wholesale Trade Agents and Brokers	25,300	25,000	24,600	300	1.2%	700	2.8%
42000000	Retail Trade	1,186,100	1,166,200	1,186,600	19,900	1.7%	-500	*
42441000	Motor Vehicle and Parts Dealers	171,300	172,500	168,000	-1,200	-0.7%	3,300	2.0%
42441100	Automobile Dealers	110,500	111,100	106,900	-600	-0.5%	3,600	3.4%

Source: U.S. Department of Labor, Bureau of Labor Statistics, Current Employment Statistics Program.

Prepared by: Florida Department of Commerce, Bureau of Workforce Statistics and Economic Research.

**NONAGRICULTURAL EMPLOYMENT IN FLORIDA
STATEWIDE (Not Seasonally Adjusted)**

Released January 07, 2026

Series	Industry Title	November 2025	October 2025	November 2024	Change from			
					Oct 2025 to Nov 2025 Level	Percent	Nov 2024 to Nov 2025 Level	Percent
42444000	Building Material and Garden Equipment and Supplies Dealers	92,400	92,100	97,600	300	0.3%	-5,200	-5.3%
42445000	Food and Beverage Retailers	278,900	275,800	271,900	3,100	1.1%	7,000	2.6%
42449000	Furniture, Home Furnishings, Electronics, and Appliance Retailers	66,300	64,800	67,200	1,500	2.3%	-900	-1.3%
42449100	Furniture and Home Furnishings Retailers	34,800	34,000	35,300	800	2.4%	-500	-1.4%
42449200	Electronics and Appliance Retailers	31,500	30,800	31,900	700	2.3%	-400	-1.3%
42455000	General Merchandise Retailers	239,500	229,800	236,800	9,700	4.2%	2,700	1.1%
42455100	Department Stores	75,300	69,400	75,000	5,900	8.5%	300	0.4%
42455200	Warehouse Clubs, Supercenters, and Other General Merchandise Retailers	164,200	160,400	161,800	3,800	2.4%	2,400	1.5%
42456000	Health and Personal Care Retailers	89,000	87,000	89,400	2,000	2.3%	-400	-0.4%
42457000	Gasoline Stations and Fuel Dealers	50,100	49,900	49,800	200	0.4%	300	0.6%
42458000	Clothing, Clothing Accessories, Shoe, and Jewelry Retailers	96,200	92,800	101,900	3,400	3.7%	-5,700	-5.6%
42459000	Sporting Goods, Hobby, Musical Instrument, Book, and Miscellaneous Retailers	102,400	101,500	104,000	900	0.9%	-1,600	-1.5%
43000000	Transportation, Warehousing, and Utilities	463,800	445,200	458,200	18,600	4.2%	5,600	1.2%
43220000	Utilities	26,700	26,300	26,400	400	1.5%	300	1.1%
43400089	Transportation and Warehousing	437,100	418,900	431,800	18,200	4.3%	5,300	1.2%
43481000	Air Transportation	59,200	58,000	59,300	1,200	2.1%	-100	-0.2%
43483000	Water Transportation	19,800	19,300	19,600	500	2.6%	200	1.0%
43484000	Truck Transportation	63,400	63,900	63,800	-500	-0.8%	-400	-0.6%
43488000	Support Activities for Transportation	75,800	74,000	73,800	1,800	2.4%	2,000	2.7%
43492000	Couriers and Messengers	79,400	73,200	72,200	6,200	8.5%	7,200	10.0%
43493000	Warehousing and Storage	112,300	104,200	113,300	8,100	7.8%	-1,000	-0.9%
50000000	Information	160,700	158,100	155,800	2,600	1.6%	4,900	3.1%
50513000	Publishing Industries	43,700	43,600	42,600	100	0.2%	1,100	2.6%
50516000	Broadcasting and Content Providers	17,100	17,100	16,700	0	0.0%	400	2.4%
50517000	Telecommunications	46,100	45,600	45,500	500	1.1%	600	1.3%
50517111	Wired Telecommunications Carriers	34,200	34,100	34,500	100	0.3%	-300	-0.9%
50518000	Computing Infrastructure Providers, Data Processing, Web Hosting, and Related	29,500	29,200	30,000	300	1.0%	-500	-1.7%
55000000	Financial Activities	691,300	693,100	690,000	-1,800	-0.3%	1,300	0.2%
55520000	Finance and Insurance	464,800	467,000	469,500	-2,200	-0.5%	-4,700	-1.0%
55522000	Credit Intermediation and Related Activities including Monetary Authorities - Cent	179,900	181,200	179,000	-1,300	-0.7%	900	0.5%
55522100	Depository Credit Intermediation including Monetary Authorities - Central Bank	123,900	123,700	122,600	200	0.2%	1,300	1.1%
55524000	Insurance Carriers and Related Activities	214,900	215,900	222,800	-1,000	-0.5%	-7,900	-3.5%
55524100	Insurance Carriers	96,600	96,300	101,000	300	0.3%	-4,400	-4.4%
55524200	Agencies, Brokerages, and Other Insurance Related Activities	118,300	119,600	121,800	-1,300	-1.1%	-3,500	-2.9%
55530000	Real Estate and Rental and Leasing	226,500	226,100	220,500	400	0.2%	6,000	2.7%
55531000	Real Estate	173,500	173,100	169,200	400	0.2%	4,300	2.5%
60000000	Professional and Business Services	1,627,600	1,636,000	1,628,900	-8,400	-0.5%	-1,300	-0.1%
60540000	Professional, Scientific, and Technical Services	768,700	771,700	759,900	-3,000	-0.4%	8,800	1.2%
60541100	Legal Services	114,600	114,000	111,800	600	0.5%	2,800	2.5%

Source: U.S. Department of Labor, Bureau of Labor Statistics, Current Employment Statistics Program.

Prepared by: Florida Department of Commerce, Bureau of Workforce Statistics and Economic Research.

**NONAGRICULTURAL EMPLOYMENT IN FLORIDA
STATEWIDE (Not Seasonally Adjusted)**

Released January 07, 2026

Series	Industry Title	November 2025	October 2025	November 2024	Change from Oct 2025 to Nov 2025		Change from Nov 2024 to Nov 2025	
					Level	Percent	Level	Percent
60541200	Accounting, Tax Preparation, Bookkeeping, and Payroll Services	94,600	94,600	90,000	0	0.0%	4,600	5.1%
60541300	Architectural, Engineering, and Related Services	115,000	115,300	114,700	-300	-0.3%	300	0.3%
60541500	Computer Systems Design and Related Services	137,600	137,900	138,400	-300	-0.2%	-800	-0.6%
60541600	Management, Scientific, and Technical Consulting Services	167,300	167,100	163,800	200	0.1%	3,500	2.1%
60550000	Management of Companies and Enterprises	142,600	142,700	139,200	-100	-0.1%	3,400	2.4%
60560000	Administrative and Support and Waste Management and Remediation Services	716,300	721,600	729,800	-5,300	-0.7%	-13,500	-1.8%
60561000	Administrative and Support Services	683,400	688,700	696,900	-5,300	-0.8%	-13,500	-1.9%
60561300	Employment Services	222,800	224,900	231,100	-2,100	-0.9%	-8,300	-3.6%
60561400	Business Support Services	69,400	68,700	70,800	700	1.0%	-1,400	-2.0%
60561500	Travel Arrangement and Reservation Services	28,200	28,300	28,100	-100	-0.4%	100	0.4%
60561600	Investigation and Security Services	80,500	81,400	77,100	-900	-1.1%	3,400	4.4%
60561700	Services to Buildings and Dwellings	199,400	202,100	199,900	-2,700	-1.3%	-500	-0.3%
60562000	Waste Management and Remediation Services	32,900	32,900	32,900	0	0.0%	0	0.0%
65000000	Private Education and Health Services	1,621,400	1,606,900	1,569,000	14,500	0.9%	52,400	3.3%
65610000	Private Educational Services	237,400	235,400	226,500	2,000	0.8%	10,900	4.8%
65611100	Private Elementary and Secondary Schools	97,300	97,000	91,800	300	0.3%	5,500	6.0%
65611300	Private Colleges, Universities, and Professional Schools	72,200	71,000	70,500	1,200	1.7%	1,700	2.4%
65620000	Health Care and Social Assistance	1,384,000	1,371,500	1,342,500	12,500	0.9%	41,500	3.1%
65621000	Ambulatory Health Care Services	636,600	630,900	621,200	5,700	0.9%	15,400	2.5%
65621100	Offices of Physicians	272,600	270,300	262,300	2,300	0.9%	10,300	3.9%
65621600	Home Health Care Services	94,100	92,900	88,000	1,200	1.3%	6,100	6.9%
65622000	Hospitals	375,900	374,000	368,700	1,900	0.5%	7,200	2.0%
65623000	Nursing and Residential Care Facilities	205,800	202,600	196,100	3,200	1.6%	9,700	4.9%
65623100	Nursing Care Facilities (Skilled Nursing Facilities)	96,900	96,100	92,500	800	0.8%	4,400	4.8%
65623300	Continuing Care Retirement Communities and Assisted Living Facilities for the Elderly	74,400	73,800	70,600	600	0.8%	3,800	5.4%
65624000	Social Assistance	165,700	164,000	156,500	1,700	1.0%	9,200	5.9%
70000000	Leisure and Hospitality	1,317,400	1,304,600	1,316,000	12,800	1.0%	1,400	0.1%
70710000	Arts, Entertainment, and Recreation	274,000	266,300	270,100	7,700	2.9%	3,900	1.4%
70713000	Amusement, Gambling, and Recreation Industries	217,500	209,500	216,100	8,000	3.8%	1,400	0.6%
70713100	Amusement Parks and Arcades	85,200	86,000	86,500	-800	-0.9%	-1,300	-1.5%
70720000	Accommodation and Food Services	1,043,400	1,038,300	1,045,900	5,100	0.5%	-2,500	-0.2%
70721000	Accommodation	196,200	196,000	200,300	200	0.1%	-4,100	-2.0%
70722000	Food Services and Drinking Places	847,200	842,300	845,600	4,900	0.6%	1,600	0.2%
80000000	Other Services	381,800	381,800	383,000	0	0.0%	-1,200	-0.3%
80811000	Repair and Maintenance	94,500	94,800	100,200	-300	-0.3%	-5,700	-5.7%
80811100	Automotive Repair and Maintenance	61,500	61,600	65,500	-100	-0.2%	-4,000	-6.1%
80812000	Personal and Laundry Services	109,900	109,100	110,200	800	0.7%	-300	-0.3%
80813000	Religious, Grantmaking, Civic, Professional, and Similar Organizations	177,400	177,900	172,600	-500	-0.3%	4,800	2.8%
90000000	Government	1,192,600	1,193,000	1,187,300	-400	*	5,300	0.4%

Source: U.S. Department of Labor, Bureau of Labor Statistics, Current Employment Statistics Program.

Prepared by: Florida Department of Commerce, Bureau of Workforce Statistics and Economic Research.

**NONAGRICULTURAL EMPLOYMENT IN FLORIDA
STATEWIDE (Not Seasonally Adjusted)**

Released January 07, 2026

Series	Industry Title	November 2025	October 2025	November 2024	Change from			
					Oct 2025 to Nov 2025 Level	Percent	Nov 2024 to Nov 2025 Level	Percent
90910000	Federal Government	153,300	152,900	163,400	400	0.3%	-10,100	-6.2%
90920000	State Government	265,200	265,900	265,200	-700	-0.3%	0	0.0%
90921611	State Government Educational Services	152,900	152,700	153,000	200	0.1%	-100	-0.1%
90922000	State Government Excluding Education	112,300	113,200	112,200	-900	-0.8%	100	0.1%
90930000	Local Government	774,100	774,200	758,700	-100	*	15,400	2.0%
90931611	Local Government Educational Services	352,900	353,600	350,900	-700	-0.2%	2,000	0.6%
90932000	Local Government excluding Educational Services	421,200	420,600	407,800	600	0.1%	13,400	3.3%

* - less than 0.1 percent

Note: Employment estimates have been rounded to the nearest hundred. Sum of detail may not equal totals due to rounding or the exclusion of certain industries from publication. All data are subject to revision.

STATE OF FLORIDA
LOCAL AREA UNEMPLOYMENT STATISTICS BY COUNTY
(NOT SEASONALLY ADJUSTED)

COUNTY	NOVEMBER 2025				OCTOBER 2025				NOVEMBER 2024			
	LABOR FORCE	EMPLOY- MENT	UNEMPLOYMENT LEVEL	RATE	LABOR FORCE	EMPLOY- MENT	UNEMPLOYMENT LEVEL	RATE	LABOR FORCE	EMPLOY- MENT	UNEMPLOYMENT LEVEL	RATE
Alachua County	145,673	137,254	8,419	5.8%	-	-	-	-	144,313	138,492	5,821	4.0%
Baker County	12,291	11,662	629	5.1%	-	-	-	-	12,181	11,742	439	3.6%
Bay County	90,824	86,132	4,692	5.2%	-	-	-	-	91,491	88,318	3,173	3.5%
Bradford County	10,464	9,890	574	5.5%	-	-	-	-	10,322	9,916	406	3.9%
Brevard County	306,674	290,244	16,430	5.4%	-	-	-	-	304,906	293,820	11,086	3.6%
Broward County	1,086,836	1,036,490	50,346	4.6%	-	-	-	-	1,083,704	1,048,542	35,162	3.2%
Calhoun County	5,106	4,812	294	5.8%	-	-	-	-	5,090	4,889	201	3.9%
Charlotte County	78,526	73,593	4,933	6.3%	-	-	-	-	76,795	73,285	3,510	4.6%
Citrus County	54,032	49,969	4,063	7.5%	-	-	-	-	53,422	50,655	2,767	5.2%
Clay County	116,376	110,298	6,078	5.2%	-	-	-	-	114,989	110,903	4,086	3.6%
Collier County	185,731	175,987	9,744	5.2%	-	-	-	-	184,465	177,967	6,498	3.5%
Columbia County	28,867	27,175	1,692	5.9%	-	-	-	-	28,075	26,870	1,205	4.3%
DeSoto County	12,722	11,926	796	6.3%	-	-	-	-	12,555	12,012	543	4.3%
Dixie County	5,977	5,582	395	6.6%	-	-	-	-	5,860	5,585	275	4.7%
Duval County	530,590	503,521	27,069	5.1%	-	-	-	-	524,629	505,883	18,746	3.6%
Escambia County	148,535	140,180	8,355	5.6%	-	-	-	-	148,159	142,510	5,649	3.8%
Flagler County	55,571	52,192	3,379	6.1%	-	-	-	-	55,027	52,761	2,266	4.1%
Franklin County	4,338	4,076	262	6.0%	-	-	-	-	4,367	4,191	176	4.0%
Gadsden County	17,795	16,709	1,086	6.1%	-	-	-	-	17,849	17,077	772	4.3%
Gilchrist County	8,323	7,873	450	5.4%	-	-	-	-	8,249	7,953	296	3.6%
Glades County	4,007	3,718	289	7.2%	-	-	-	-	3,894	3,695	199	5.1%
Gulf County	6,967	6,620	347	5.0%	-	-	-	-	6,663	6,441	222	3.3%
Hamilton County	4,182	3,893	289	6.9%	-	-	-	-	4,107	3,900	207	5.0%
Hardee County	9,784	9,137	647	6.6%	-	-	-	-	9,833	9,384	449	4.6%
Hendry County	22,317	21,107	1,210	5.4%	-	-	-	-	21,339	20,502	837	3.9%
Hernando County	92,122	86,829	5,293	5.7%	-	-	-	-	91,016	87,154	3,862	4.2%
Highlands County	36,555	33,897	2,658	7.3%	-	-	-	-	36,652	34,838	1,814	4.9%
Hillsborough County	818,484	777,861	40,623	5.0%	-	-	-	-	809,817	780,922	28,895	3.6%
Holmes County	7,691	7,262	429	5.6%	-	-	-	-	7,773	7,467	306	3.9%
Indian River County	67,706	63,533	4,173	6.2%	-	-	-	-	67,315	64,490	2,825	4.2%
Jackson County	18,833	17,775	1,058	5.6%	-	-	-	-	18,363	17,651	712	3.9%
Jefferson County	7,126	6,763	363	5.1%	-	-	-	-	7,152	6,924	228	3.2%
Lafayette County	2,636	2,457	179	6.8%	-	-	-	-	2,574	2,450	124	4.8%
Lake County	198,672	188,118	10,554	5.3%	-	-	-	-	197,492	190,349	7,143	3.6%
Lee County	377,845	356,985	20,860	5.5%	-	-	-	-	372,448	358,505	13,943	3.7%
Leon County	167,031	158,038	8,993	5.4%	-	-	-	-	168,487	162,206	6,281	3.7%
Levy County	19,382	18,246	1,136	5.9%	-	-	-	-	19,248	18,432	816	4.2%
Liberty County	2,526	2,372	154	6.1%	-	-	-	-	2,492	2,393	99	4.0%
Madison County	6,886	6,452	434	6.3%	-	-	-	-	6,801	6,509	292	4.3%

Source: U.S. Department of Labor, Bureau of Labor Statistics, Local Area Unemployment Statistics Program, in cooperation with the Florida Department of Commerce, Bureau of Workforce Statistics and Economic Research.

STATE OF FLORIDA
LOCAL AREA UNEMPLOYMENT STATISTICS BY COUNTY
(NOT SEASONALLY ADJUSTED)

COUNTY	NOVEMBER 2025				OCTOBER 2025				NOVEMBER 2024			
	LABOR FORCE	EMPLOY- MENT	UNEMPLOYMENT LEVEL	RATE	LABOR FORCE	EMPLOY- MENT	UNEMPLOYMENT LEVEL	RATE	LABOR FORCE	EMPLOY- MENT	UNEMPLOYMENT LEVEL	RATE
Manatee County	199,115	188,297	10,818	5.4%	-	-	-	-	197,078	189,476	7,602	3.9%
Marion County	161,338	151,232	10,106	6.3%	-	-	-	-	158,710	151,880	6,830	4.3%
Martin County	72,729	68,850	3,879	5.3%	-	-	-	-	72,212	69,574	2,638	3.7%
Miami-Dade County	1,459,028	1,412,532	46,496	3.2%	-	-	-	-	1,435,262	1,400,418	34,844	2.4%
Monroe County	51,303	49,462	1,841	3.6%	-	-	-	-	49,448	48,261	1,187	2.4%
Nassau County	47,986	45,560	2,426	5.1%	-	-	-	-	47,411	45,818	1,593	3.4%
Okaloosa County	100,509	95,450	5,059	5.0%	-	-	-	-	100,628	97,232	3,396	3.4%
Okeechobee County	16,278	15,319	959	5.9%	-	-	-	-	15,902	15,248	654	4.1%
Orange County	827,585	788,082	39,503	4.8%	-	-	-	-	825,147	797,395	27,752	3.4%
Osceola County	236,390	224,440	11,950	5.1%	-	-	-	-	235,441	226,983	8,458	3.6%
Palm Beach County	784,137	745,143	38,994	5.0%	-	-	-	-	773,241	746,539	26,702	3.5%
Pasco County	300,971	284,828	16,143	5.4%	-	-	-	-	297,010	285,461	11,549	3.9%
Pinellas County	500,354	476,512	23,842	4.8%	-	-	-	-	498,998	480,557	18,441	3.7%
Polk County	361,402	339,580	21,822	6.0%	-	-	-	-	358,201	342,719	15,482	4.3%
Putnam County	30,301	28,407	1,894	6.3%	-	-	-	-	29,296	27,991	1,305	4.5%
Santa Rosa County	90,644	85,739	4,905	5.4%	-	-	-	-	90,403	87,116	3,287	3.6%
Sarasota County	201,979	190,729	11,250	5.6%	-	-	-	-	198,726	191,173	7,553	3.8%
Seminole County	278,346	265,641	12,705	4.6%	-	-	-	-	277,805	269,041	8,764	3.2%
St. Johns County	157,929	149,914	8,015	5.1%	-	-	-	-	155,823	150,387	5,436	3.5%
St. Lucie County	169,769	160,149	9,620	5.7%	-	-	-	-	168,624	161,838	6,786	4.0%
Sumter County	34,912	31,788	3,124	8.9%	-	-	-	-	34,202	32,183	2,019	5.9%
Suwannee County	18,174	17,114	1,060	5.8%	-	-	-	-	17,740	17,007	733	4.1%
Taylor County	5,709	5,172	537	9.4%	-	-	-	-	5,625	5,275	350	6.2%
Union County	4,403	4,111	292	6.6%	-	-	-	-	4,263	4,062	201	4.7%
Volusia County	267,527	252,148	15,379	5.7%	-	-	-	-	265,799	255,059	10,740	4.0%
Wakulla County	18,097	17,287	810	4.5%	-	-	-	-	18,153	17,623	530	2.9%
Walton County	40,619	38,654	1,965	4.8%	-	-	-	-	40,692	39,385	1,307	3.2%
Washington County	9,241	8,656	585	6.3%	-	-	-	-	9,294	8,898	396	4.3%
Florida (Not Seasonally Adjusted)	11,223,000	10,667,000	555,000	4.9%	-	-	-	-	11,121,000	10,732,000	389,000	3.5%
Florida (Seasonally Adjusted)	11,209,000	10,743,000	466,000	4.2%	-	-	-	-	11,169,000	10,783,000	386,000	3.5%
United States (Not Seasonally Adjusted)	171,467,000	164,066,000	7,401,000	4.3%	-	-	-	-	168,164,000	161,456,000	6,708,000	4.0%
United States (Seasonally Adjusted)	171,571,000	163,741,000	7,831,000	4.6%	-	-	-	-	168,304,000	161,183,000	7,121,000	4.2%

Note: Unemployment and labor force statistics for October 2025 are not available due to a lapse in federal data collection activities.

Released: Wednesday, January 07, 2026

NOTE: Items may not add to totals or compute to displayed percentages due to rounding. All data are subject to revision.

Source: U.S. Department of Labor, Bureau of Labor Statistics, Local Area Unemployment Statistics Program, in cooperation with the Florida Department of Commerce, Bureau of Workforce Statistics and Economic Research.

STATE OF FLORIDA
LOCAL AREA UNEMPLOYMENT STATISTICS BY METROPOLITAN STATISTICAL AREA (MSA) AND METROPOLITAN DIVISION (MD)
(NOT SEASONALLY ADJUSTED)

MSA/MD	NOVEMBER 2025				OCTOBER 2025				NOVEMBER 2024			
	LABOR FORCE	EMPLOY- MENT	UNEMPLOYMENT LEVEL	UNEMPLOYMENT RATE	LABOR FORCE	EMPLOY- MENT	UNEMPLOYMENT LEVEL	UNEMPLOYMENT RATE	LABOR FORCE	EMPLOY- MENT	UNEMPLOYMENT LEVEL	UNEMPLOYMENT RATE
Cape Coral-Fort Myers MSA	377,845	356,985	20,860	5.5%	-	-	-	-	372,448	358,505	13,943	3.7%
Crestview-Fort Walton Beach-Destin MSA	141,128	134,104	7,024	5.0%	-	-	-	-	141,320	136,617	4,703	3.3%
Deltona-Daytona Beach-Ormond Beach MSA	323,098	304,340	18,758	5.8%	-	-	-	-	320,826	307,820	13,006	4.1%
Gainesville MSA	173,378	163,373	10,005	5.8%	-	-	-	-	171,810	164,877	6,933	4.0%
Homosassa Springs MSA	54,032	49,969	4,063	7.5%	-	-	-	-	53,422	50,655	2,767	5.2%
Jacksonville MSA	865,172	820,955	44,217	5.1%	-	-	-	-	855,033	824,733	30,300	3.5%
Lakeland-Winter Haven MSA	361,402	339,580	21,822	6.0%	-	-	-	-	358,201	342,719	15,482	4.3%
Miami-Fort Lauderdale-West Palm Beach MSA	3,330,001	3,194,165	135,836	4.1%	-	-	-	-	3,292,207	3,195,499	96,708	2.9%
Fort Lauderdale-Pompano Beach-Sunrise Division	1,086,836	1,036,490	50,346	4.6%	-	-	-	-	1,083,704	1,048,542	35,162	3.2%
Miami-Miami Beach-Kendall MD	1,459,028	1,412,532	46,496	3.2%	-	-	-	-	1,435,262	1,400,418	34,844	2.4%
West Palm Beach-Boca Raton-Delray Beach MD	784,137	745,143	38,994	5.0%	-	-	-	-	773,241	746,539	26,702	3.5%
Naples-Marco Island MSA	185,731	175,987	9,744	5.2%	-	-	-	-	184,465	177,967	6,498	3.5%
North Port-Bradenton-Sarasota MSA	401,094	379,026	22,068	5.5%	-	-	-	-	395,804	380,649	15,155	3.8%
Ocala MSA	161,338	151,232	10,106	6.3%	-	-	-	-	158,710	151,880	6,830	4.3%
Orlando-Kissimmee-Sanford MSA	1,540,993	1,466,281	74,712	4.8%	-	-	-	-	1,535,885	1,483,768	52,117	3.4%
Palm Bay-Melbourne-Titusville MSA	306,674	290,244	16,430	5.4%	-	-	-	-	304,906	293,820	11,086	3.6%
Panama City-Panama City Beach MSA	100,065	94,788	5,277	5.3%	-	-	-	-	100,785	97,216	3,569	3.5%
Pensacola-Ferry Pass-Brent MSA	239,179	225,919	13,260	5.5%	-	-	-	-	238,562	229,626	8,936	3.7%
Port St. Lucie MSA	242,498	228,999	13,499	5.6%	-	-	-	-	240,836	231,412	9,424	3.9%
Punta Gorda MSA	78,526	73,593	4,933	6.3%	-	-	-	-	76,795	73,285	3,510	4.6%
Sebastian-Vero Beach MSA	67,706	63,533	4,173	6.2%	-	-	-	-	67,315	64,490	2,825	4.2%
Sebring MSA	36,555	33,897	2,658	7.3%	-	-	-	-	36,652	34,838	1,814	4.9%
Tallahassee MSA	210,049	198,797	11,252	5.4%	-	-	-	-	211,641	203,830	7,811	3.7%
Tampa-St. Petersburg-Clearwater MSA	1,711,931	1,626,030	85,901	5.0%	-	-	-	-	1,696,841	1,634,094	62,747	3.7%
St. Petersburg-Clearwater-Largo MD	500,354	476,512	23,842	4.8%	-	-	-	-	498,998	480,557	18,441	3.7%
Tampa MD	1,211,577	1,149,518	62,059	5.1%	-	-	-	-	1,197,843	1,153,537	44,306	3.7%
Wildwood-The Villages MSA	34,912	31,788	3,124	8.9%	-	-	-	-	34,202	32,183	2,019	5.9%
								-				
Florida (Not Seasonally Adjusted)	11,223,000	10,667,000	555,000	4.9%	-	-	-	-	11,121,000	10,732,000	389,000	3.5%
Florida (Seasonally Adjusted)	11,209,000	10,743,000	466,000	4.2%	-	-	-	-	11,169,000	10,783,000	386,000	3.5%
								-				
United States (Not Seasonally Adjusted)	171,467,000	164,066,000	7,401,000	4.3%	-	-	-	-	168,164,000	161,456,000	6,708,000	4.0%
United States (Seasonally Adjusted)	171,571,000	163,741,000	7,831,000	4.6%	-	-	-	-	168,304,000	161,183,000	7,121,000	4.2%

Note: Unemployment and labor force statistics for October 2025 are not available due to a lapse in federal data collection activities.

Released: Wednesday, January 07, 2026

NOTE: Items may not add to totals or compute to displayed percentages due to rounding. All data are subject to revision.

Source: U.S. Department of Labor, Bureau of Labor Statistics, Local Area Unemployment Statistics Program, in cooperation with the Florida Department of Commerce, Bureau of Workforce Statistics and Economic Research.

STATE OF FLORIDA
COUNTIES RANKED BY UNEMPLOYMENT RATE
(NOT SEASONALLY ADJUSTED)
NOVEMBER 2025 (PRELIMINARY)

1	Taylor County	9.4%
2	Sumter County	8.9%
3	Citrus County	7.5%
4	Highlands County	7.3%
5	Glades County	7.2%
6	Hamilton County	6.9%
7	Lafayette County	6.8%
8	Dixie County	6.6%
8	Hardee County	6.6%
8	Union County	6.6%
11	Charlotte County	6.3%
11	DeSoto County	6.3%
11	Madison County	6.3%
11	Marion County	6.3%
11	Putnam County	6.3%
11	Washington County	6.3%
17	Indian River County	6.2%
18	Flagler County	6.1%
18	Gadsden County	6.1%
18	Liberty County	6.1%
21	Franklin County	6.0%
21	Polk County	6.0%
23	Columbia County	5.9%
23	Levy County	5.9%
23	Okeechobee County	5.9%
26	Alachua County	5.8%
26	Calhoun County	5.8%
26	Suwannee County	5.8%
29	Hernando County	5.7%
29	St. Lucie County	5.7%
29	Volusia County	5.7%
32	Escambia County	5.6%
32	Holmes County	5.6%
32	Jackson County	5.6%
32	Sarasota County	5.6%
36	Bradford County	5.5%
36	Lee County	5.5%
38	Brevard County	5.4%
38	Gilchrist County	5.4%
38	Hendry County	5.4%

STATE OF FLORIDA
COUNTIES RANKED BY UNEMPLOYMENT RATE
(NOT SEASONALLY ADJUSTED)
NOVEMBER 2025 (PRELIMINARY)

38	Leon County	5.4%
38	Manatee County	5.4%
38	Pasco County	5.4%
38	Santa Rosa County	5.4%
45	Lake County	5.3%
45	Martin County	5.3%
47	Bay County	5.2%
47	Clay County	5.2%
47	Collier County	5.2%
50	Baker County	5.1%
50	Duval County	5.1%
50	Jefferson County	5.1%
50	Nassau County	5.1%
50	Osceola County	5.1%
50	St. Johns County	5.1%
56	Gulf County	5.0%
56	Hillsborough County	5.0%
56	Okaloosa County	5.0%
56	Palm Beach County	5.0%
	Florida	4.9%
60	Orange County	4.8%
60	Pinellas County	4.8%
60	Walton County	4.8%
63	Broward County	4.6%
63	Seminole County	4.6%
65	Wakulla County	4.5%
	United States	4.3%
66	Monroe County	3.6%
67	Miami-Dade County	3.2%

Note: Unemployment and labor force statistics for October 2025 are not available due to a lapse in federal data collection activities.

Source: U.S. Department of Labor, Bureau of Labor Statistics, Local Area Unemployment Statistics Program, in cooperation with the Florida Department of Commerce, Bureau of Workforce Statistics and Economic Research.

Released: Wednesday, January 7, 2026

NOTE: All data are subject to revision.

STATE OF FLORIDA
METROPOLITAN STATISTICAL AREAS (MSAs) AND METROPOLITAN DIVISIONS (MDs)
RANKED BY UNEMPLOYMENT RATE
(NOT SEASONALLY ADJUSTED)
NOVEMBER 2025 (PRELIMINARY)

1	Wildwood-The Villages MSA	8.9%
2	Homosassa Springs MSA	7.5%
3	Sebring MSA	7.3%
4	Ocala MSA	6.3%
4	Punta Gorda MSA	6.3%
6	Sebastian-Vero Beach MSA	6.2%
7	Lakeland-Winter Haven MSA	6.0%
8	Deltona-Daytona Beach-Ormond Beach MSA	5.8%
8	Gainesville MSA	5.8%
10	Port St. Lucie MSA	5.6%
11	Cape Coral-Fort Myers MSA	5.5%
11	North Port-Bradenton-Sarasota MSA	5.5%
11	Pensacola-Ferry Pass-Brent MSA	5.5%
14	Palm Bay-Melbourne-Titusville MSA	5.4%
14	Tallahassee MSA	5.4%
16	Panama City-Panama City Beach MSA	5.3%
17	Naples-Marco Island MSA	5.2%
18	Jacksonville MSA	5.1%
18	Tampa MD	5.1%
20	Crestview-Fort Walton Beach-Destin MSA	5.0%
20	West Palm Beach-Boca Raton-Delray Beach MD	5.0%
	Florida	4.9%
22	Orlando-Kissimmee-Sanford MSA	4.8%
22	St. Petersburg-Clearwater-Largo MD	4.8%
24	Fort Lauderdale-Pompano Beach-Sunrise MD	4.6%
	United States	4.3%
25	Miami-Miami Beach-Kendall MD	3.2%

Note: Unemployment and labor force statistics for October 2025 are not available due to a lapse in federal data collection activities.

Released: Wednesday, January 07, 2026

NOTE: All data are subject to revision.

TOTAL NONAGRICULTURAL EMPLOYMENT
FLORIDA (Not Seasonally Adjusted)

Area	November 2025	October 2025	November 2024	Over-the-Month Change		Over-the-Year Change	
				Level	Percent	Level	Percent
Statewide	10,134,300	10,076,400	10,069,700	57,900	0.6%	64,600	0.6%
Cape Coral-Fort Myers MSA	318,800	316,700	315,700	2,100	0.7%	3,100	1.0%
Crestview-Fort Walton Beach-Destin MSA	130,200	130,600	131,200	-400	-0.3%	-1,000	-0.8%
Deltona-Daytona Beach-Ormond Beach MSA	231,000	228,900	230,300	2,100	0.9%	700	0.3%
Fort Lauderdale-Pompano Beach-Sunrise Division	941,400	938,800	938,500	2,600	0.3%	2,900	0.3%
Gainesville MSA	170,900	170,200	169,500	700	0.4%	1,400	0.8%
Homosassa Springs MSA	36,300	36,100	36,300	200	0.6%	0	0.0%
Jacksonville MSA	826,900	819,200	816,400	7,700	0.9%	10,500	1.3%
Lakeland-Winter Haven MSA	282,000	279,400	279,400	2,600	0.9%	2,600	0.9%
Miami-Ft. Lauderdale-West Palm Beach MSA	3,021,000	3,001,000	3,002,600	20,000	0.7%	18,400	0.6%
Miami-Miami Beach-Kendall MD	1,362,000	1,351,400	1,356,100	10,600	0.8%	5,900	0.4%
Naples-Marco Island MSA	178,200	175,500	178,100	2,700	1.5%	100	0.1%
North Port-Bradenton-Sarasota MSA	356,900	354,100	353,900	2,800	0.8%	3,000	0.8%
Ocala MSA	126,000	125,300	124,800	700	0.6%	1,200	1.0%
Orlando-Kissimmee-Sanford MSA	1,530,200	1,522,600	1,523,000	7,600	0.5%	7,200	0.5%
Palm Bay-Melbourne-Titusville MSA	262,300	260,800	261,100	1,500	0.6%	1,200	0.5%
Panama City-Panama City Beach MSA	90,600	90,800	92,000	-200	-0.2%	-1,400	-1.5%
Pensacola-Ferry Pass-Brent MSA	202,100	202,000	202,600	100	*	-500	-0.2%
Port St. Lucie MSA	179,700	178,600	179,300	1,100	0.6%	400	0.2%
Punta Gorda MSA	59,700	58,600	58,700	1,100	1.9%	1,000	1.7%
St. Petersburg - Clearwater - Largo Division	490,500	487,600	486,900	2,900	0.6%	3,600	0.7%
Sebastian-Vero Beach MSA	59,800	59,200	59,900	600	1.0%	-100	-0.2%
Sebring MSA	28,800	28,600	29,100	200	0.7%	-300	-1.0%
Tallahassee MSA	205,400	204,800	207,000	600	0.3%	-1,600	-0.8%
Tampa Division	1,090,900	1,086,900	1,075,900	4,000	0.4%	15,000	1.4%
Tampa-St. Petersburg-Clearwater MSA	1,581,400	1,574,500	1,562,800	6,900	0.4%	18,600	1.2%
West Palm Beach-Boca Raton-Delray Beach MD	717,600	710,800	708,000	6,800	1.0%	9,600	1.4%
Wildwood-The Villages MSA	42,000	42,000	42,000	0	0.0%	0	0.0%

* - less than 0.1 percent

Note: Employment estimates have been rounded to the nearest hundred. Sum of detail may not equal totals due to rounding or the exclusion of certain industries from publication. All data are subject to revision. January 07, 2026.

Total Nonagricultural Employment
Florida and Selected Metropolitan Statistical Areas (MSAs) and Metropolitan Divisions (MDs)

Seasonally Adjusted

Area	November ^p 2025	October ^r 2025	November 2024	Over-the-Month Change		Over-the-Year Change	
				Level	Percent	Level	Percent
Florida	10,047,900	10,048,200	9,972,600	-300	*	75,300	0.8%
Cape Coral-Fort Myers MSA	315,600	315,500	312,500	100	*	3,100	1.0%
Crestview-Fort Walton Beach-Destin MSA	130,600	131,100	131,200	-500	-0.4%	-600	-0.5%
Deltona-Daytona Beach-Ormond Beach MSA	229,600	229,100	228,700	500	0.2%	900	0.4%
Gainesville MSA	168,300	167,900	166,800	400	0.2%	1,500	0.9%
Homosassa Springs MSA	36,200	36,100	36,100	100	0.3%	100	0.3%
Jacksonville MSA	819,800	817,700	809,100	2,100	0.3%	10,700	1.3%
Lakeland-Winter Haven MSA	279,000	279,400	275,400	-400	-0.1%	3,600	1.3%
Miami-Ft. Lauderdale-West Palm Beach MSA	2,991,500	2,992,500	2,977,700	-1,000	*	13,800	-0.5%
Fort Lauderdale-Pompano Beach-Sunrise Division	932,700	932,700	927,900	0	*	4,800	0.5%
Miami-Miami Beach-Kendall MD	1,350,800	1,350,100	1,344,200	700	0.1%	6,600	0.5%
West Palm Beach-Boca Raton-Delray Beach MD	710,500	709,700	699,900	800	0.1%	10,600	1.5%
Naples-Marco Island MSA	176,500	176,500	176,300	0	*	200	0.1%
North Port-Bradenton-Sarasota MSA	355,500	355,600	352,100	-100	*	3,400	1.0%
Ocala MSA	124,800	125,200	123,500	-400	-0.3%	1,300	1.1%
Orlando-Kissimmee-Sanford MSA	1,517,500	1,518,500	1,507,900	-1,000	-0.1%	9,600	0.6%
Palm Bay-Melbourne-Titusville MSA	260,100	261,100	258,800	-1,000	-0.4%	1,300	0.5%
Panama City-Panama City Beach MSA	90,700	90,800	91,900	-100	-0.1%	-1,200	-1.3%
Pensacola -Ferry Pass-Brent MSA	201,200	201,800	201,200	-600	-0.3%	0	*
Port St. Lucie MSA	177,900	178,600	177,700	-700	-0.4%	200	0.1%
Punta Gorda MSA	59,200	59,000	58,100	200	0.3%	1,100	1.9%
Sebastian-Vero Beach MSA	59,500	59,400	59,400	100	0.2%	100	0.2%
Sebring MSA	28,600	28,700	28,800	-100	-0.3%	-200	-0.7%
Tallahassee MSA	202,700	202,600	204,000	100	*	-1,300	-0.6%
Tampa - St. Petersburg - Clearwater MSA	1,567,300	1,564,000	1,552,300	3,300	0.2%	15,000	-1.0%
St. Petersburg - Clearwater - Largo Division	487,700	487,800	483,900	-100	*	3,800	0.8%
Tampa Division	1,080,800	1,083,900	1,066,000	-3,100	-0.3%	14,800	1.4%
Wildwood-The Villages MSA	41,800	41,900	41,600	-100	-0.2%	200	0.5%

Released: January 07, 2026

p = preliminary, r = revised

* - less than 0.1 percent