

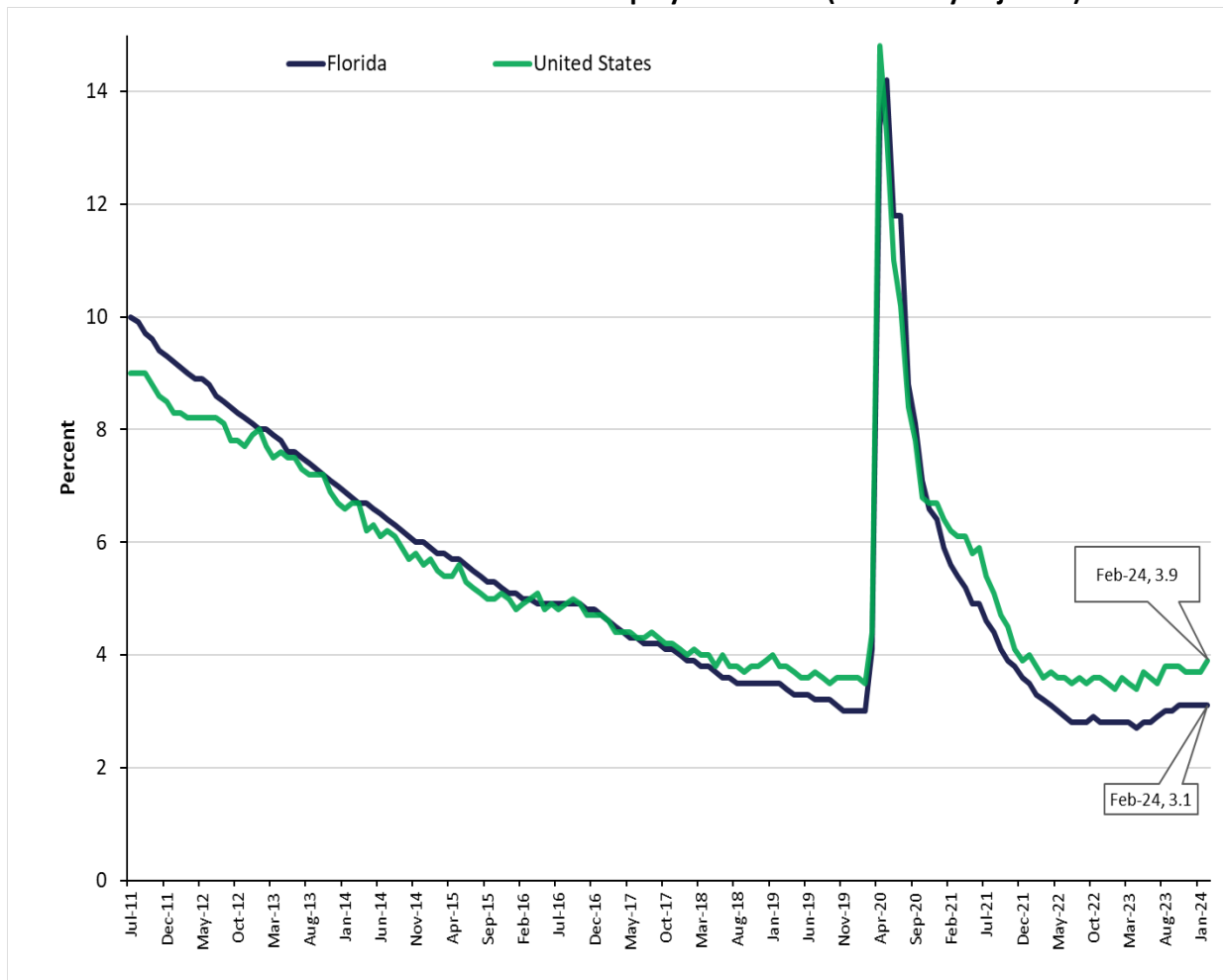
CONTACT: Bureau of Workforce Statistics  
and Economic Research  
(850) 245-7205

### Florida's February Figures Released

Florida's seasonally adjusted unemployment rate was 3.1 percent in February 2024, unchanged from the January 2024 rate, and up 0.3 percentage point from a year ago. There were 345,000 jobless Floridians out of a labor force of 11,089,000. The U.S. seasonally adjusted unemployment rate was 3.9 percent in February.

Florida's seasonally adjusted total nonagricultural employment was 9,887,600 in February 2024, a decrease of 5,500 jobs (-0.1 percent) over the month. The state gained 226,200 jobs over the year, an increase of 2.3 percent. Nationally, the number of jobs rose 1.8 percent over the year.

United States and Florida Unemployment Rates (seasonally adjusted)



Source: U.S. Department of Labor, Bureau of Labor Statistics, Local Area Unemployment Statistics Program, in cooperation with the Florida Department of Commerce, Bureau of Workforce Statistics and Economic Research.

## Florida's Nonagricultural Employment by Industry (Seasonally Adjusted)

- Nine of ten major industries experienced positive over-the-year job growth in February.
- The industries gaining jobs over the year included education and health services (+57,500 jobs, +4.0 percent); trade, transportation, and utilities (+48,300 jobs, +2.5 percent); leisure and hospitality (+35,000 jobs, +2.7 percent); total government (+32,000 jobs, +2.9 percent); construction (+21,000 jobs, +3.4 percent); other services (+11,200 jobs, +3.1 percent); manufacturing (+10,500 jobs, +2.5 percent); financial activities (+7,100 jobs, +1.0 percent); and professional and business services (+4,300 jobs, +0.3 percent).
- The only major industry losing jobs over the year was information (-900 jobs, -0.6 percent).

## Local Area Unemployment Statistics (Not Seasonally Adjusted)

- In February 2024, Miami-Dade County had the state's lowest unemployment rate (1.6 percent), followed by Monroe County (2.1 percent), and Gulf County and Wakulla County (2.9 percent each).
- Citrus County had the highest unemployment rate (5.2 percent) in Florida in February 2024, followed by Sumter County (5.1 percent), and Highlands County (4.8 percent).

## Area Nonagricultural Employment (Not Seasonally Adjusted)

- In February 2024, 23 of 24 metro areas in Florida had over-the-year job gains. The areas with the largest gains were the Miami-Miami Beach-Kendall MD (+35,600 jobs, +2.8 percent), followed by the Tampa-Saint Petersburg-Clearwater MSA (+29,600 jobs, +1.9 percent), and the Orlando-Kissimmee-Sanford MSA (+26,100 jobs, +1.8 percent).
- The Homosassa Springs MSA lost jobs over the year in February 2024 (-300 jobs, -0.8 percent).

The unemployment and job growth rates are estimates, which are primarily based on surveys created and mandated by the U.S. Bureau of Labor Statistics in cooperation with the Florida Department of Commerce.

The unemployment rate is derived from Florida household surveys conducted by the U.S. Census Bureau under contract with the U.S. Bureau of Labor Statistics. The job growth rate is derived from Florida employer surveys conducted by the U.S. Bureau of Labor Statistics.

Both estimates are revised on a monthly basis. In addition, these estimates are benchmarked (revised) annually based on actual counts from Florida's Reemployment Assistance tax records and other data.

Procedures mandated by the U.S. Bureau of Labor Statistics may result in more variable month-to-month changes. For further information, go to: <https://www.bls.gov/sae/>

The mission of the Florida Department of Commerce is to promote economic prosperity for all Floridians and businesses through successful workforce, community, and economic development strategies. Please visit [www.floridajobs.org](http://www.floridajobs.org) for more information.

*The next Florida Employment and Unemployment release will be April 19, 2024, at 10:00 A.M.*

LABOR FORCE STATUS OF THE CIVILIAN NONINSTITUTIONAL POPULATION  
RELEASE DATE: MARCH 22, 2024

**SEASONALLY ADJUSTED**

	Current Month February 2024	Month Ago January 2024	Year Ago February 2023	Over-the-Month Change		Over-the-Year Change	
				Level	Percent	Level	Percent

**STATE OF FLORIDA**

Civilian Noninstitutional							
Population 16+	18,662,000	18,634,000	18,304,000	28,000	0.2	358,000	2.0
Civilian Labor Force	11,089,000	11,077,000	10,872,000	12,000	0.1	217,000	2.0
Employment	10,744,000	10,737,000	10,571,000	7,000	0.1	173,000	1.6
Unemployment	345,000	340,000	301,000	5,000	1.5	44,000	14.6
Unemployment Rate (%)	3.1	3.1	2.8	0.0	--	0.3	--

**UNITED STATES**

Civilian Noninstitutional							
Population 16+	267,711,000	267,540,000	266,112,000	171,000	0.1	1,599,000	0.6
Civilian Labor Force	167,426,000	167,276,000	166,263,000	150,000	0.1	1,163,000	0.7
Employment	160,968,000	161,152,000	160,301,000	-184,000	-0.1	667,000	0.4
Unemployment	6,458,000	6,124,000	5,962,000	334,000	5.5	496,000	8.3
Unemployment Rate (%)	3.9	3.7	3.6	0.2	--	0.3	--

**NOT SEASONALLY ADJUSTED**

	Current Month February 2024	Month Ago January 2024	Year Ago February 2023	Over-the-Month Change		Over-the-Year Change	
				Level	Percent	Level	Percent

**STATE OF FLORIDA**

Civilian Noninstitutional							
Population 16+	18,662,000	18,634,000	18,304,000	28,000	0.2	358,000	2.0
Civilian Labor Force	11,077,000	11,055,000	10,857,000	22,000	0.2	220,000	2.0
Employment	10,728,000	10,710,000	10,563,000	18,000	0.2	165,000	1.6
Unemployment	348,000	345,000	294,000	3,000	0.9	54,000	18.4
Unemployment Rate (%)	3.1	3.1	2.7	0.0	--	0.4	--

**UNITED STATES**

Civilian Noninstitutional							
Population 16+	267,711,000	267,540,000	266,112,000	171,000	0.1	1,599,000	0.6
Civilian Labor Force	167,285,000	166,428,000	166,178,000	857,000	0.5	1,107,000	0.7
Employment	160,315,000	159,650,000	159,713,000	665,000	0.4	602,000	0.4
Unemployment	6,970,000	6,778,000	6,465,000	192,000	2.8	505,000	7.8
Unemployment Rate (%)	4.2	4.1	3.9	0.1	--	0.3	--

Note: All estimates except unemployment rates are rounded to the nearest thousand. Items may not add to totals or compute to displayed percentages due to rounding. All data are subject to revision.

Source: U.S. Department of Labor, Bureau of Labor Statistics, Local Area Unemployment Statistics Program, in cooperation with the Florida Department of Commerce, Bureau of Workforce Statistics and Economic Research.

**Nonagricultural Employment in Florida  
Seasonally Adjusted**

	February 2024	January 2024	February 2023	Over-the-Month Change		Over-the-Year Change	
				Level	Percent	Level	Percent
Total Nonagricultural Employment	9,887,600	9,893,100	9,661,400	-5,500	-0.1	226,200	2.3
Total Private	8,742,600	8,752,000	8,548,400	-9,400	-0.1	194,200	2.3
Goods Producing	1,074,300	1,078,300	1,042,600	-4,000	-0.4	31,700	3.0
Mining, Logging, and Construction	646,500	649,600	625,300	-3,100	-0.5	21,200	3.4
Construction	640,500	643,700	619,500	-3,200	-0.5	21,000	3.4
Manufacturing	427,800	428,700	417,300	-900	-0.2	10,500	2.5
Durable Goods	293,200	292,400	287,000	800	0.3	6,200	2.2
Nondurable Goods	134,600	136,300	130,300	-1,700	-1.2	4,300	3.3
Service Producing	8,813,300	8,814,800	8,618,800	-1,500	*	194,500	2.3
Private Service Providing	7,668,300	7,673,700	7,505,800	-5,400	-0.1	162,500	2.2
Trade, Transportation, and Utilities	1,997,300	1,998,200	1,949,000	-900	*	48,300	2.5
Wholesale Trade	401,100	399,000	385,200	2,100	0.5	15,900	4.1
Retail Trade	1,163,600	1,167,800	1,138,700	-4,200	-0.4	24,900	2.2
Transportation, Warehousing, and Utilities	432,600	431,400	425,100	1,200	0.3	7,500	1.8
Information	158,600	158,900	159,500	-300	-0.2	-900	-0.6
Financial Activities	685,100	689,400	678,000	-4,300	-0.6	7,100	1.0
Finance and Insurance	464,400	468,500	462,200	-4,100	-0.9	2,200	0.5
Real Estate, Rental, and Leasing	220,700	220,900	215,800	-200	-0.1	4,900	2.3
Professional and Business Services	1,622,300	1,623,100	1,618,000	-800	*	4,300	0.3
Professional and Technical Services	748,500	747,000	729,600	1,500	0.2	18,900	2.6
Management of Companies and Enterprises	134,300	134,500	132,700	-200	-0.1	1,600	1.2
Administrative and Waste Services	739,500	741,600	755,700	-2,100	-0.3	-16,200	-2.1
Education and Health Services	1,507,700	1,508,800	1,450,200	-1,100	-0.1	57,500	4.0
Educational Services	204,900	202,800	199,000	2,100	1.0	5,900	3.0
Health Care and Social Assistance	1,302,800	1,306,000	1,251,200	-3,200	-0.2	51,600	4.1
Leisure and Hospitality	1,323,500	1,321,800	1,288,500	1,700	0.1	35,000	2.7
Arts, Entertainment, and Recreation	259,300	260,800	254,400	-1,500	-0.6	4,900	1.9
Accommodation and Food Services	1,064,200	1,061,000	1,034,100	3,200	0.3	30,100	2.9
Other Services	373,800	373,500	362,600	300	0.1	11,200	3.1

Source: U.S. Department of Labor, Bureau of Labor Statistics, Current Employment Statistics Program.  
Prepared by: Florida Department of Commerce, Bureau of Workforce Statistics and Economic Research.

**Nonagricultural Employment in Florida  
Seasonally Adjusted**

	February 2024	January 2024	February 2023	Over-the-Month Change		Over-the-Year Change	
				Level	Percent	Level	Percent
Total Government	1,145,000	1,141,100	1,113,000	3,900	0.3	32,000	2.9
Federal Government	159,800	158,600	152,800	1,200	0.8	7,000	4.6
State Government	250,300	249,100	242,300	1,200	0.5	8,000	3.3
Local Government	734,900	733,400	717,900	1,500	0.2	17,000	2.4

Released: March 22, 2024

\* - less than 0.1 percent

Note: Sum of detail may not equal totals due to rounding or the exclusion of certain industries from publication. All data are subject to revision.

**NONAGRICULTURAL EMPLOYMENT IN FLORIDA  
STATEWIDE (Not Seasonally Adjusted)**

Released March 22, 2024

Series	Industry Title	February 2024	January 2024	February 2023	Change from		Feb 2023 to Feb 2024 Level	Feb 2023 to Feb 2024 Percent
					Jan 2024 to Feb 2024 Level	Percent		
00000000	Total Nonfarm	9,911,500	9,859,400	9,693,000	52,100	0.5%	218,500	2.3%
05000000	Total Private	8,745,900	8,708,100	8,559,500	37,800	0.4%	186,400	2.2%
06000000	Goods Producing	1,072,700	1,067,900	1,041,200	4,800	0.4%	31,500	3.0%
07000000	Service-Providing	8,838,800	8,791,500	8,651,800	47,300	0.5%	187,000	2.2%
08000000	Private Service Providing	7,673,200	7,640,200	7,518,300	33,000	0.4%	154,900	2.1%
10000000	Mining and Logging	6,000	5,900	5,700	100	1.7%	300	5.3%
10212000	Mining (except Oil and Gas)	3,600	3,500	3,300	100	2.9%	300	9.1%
15000000	Mining, Logging and Construction	646,500	643,900	623,900	2,600	0.4%	22,600	3.6%
20000000	Construction	640,500	638,000	618,200	2,500	0.4%	22,300	3.6%
20236000	Construction of Buildings	132,700	132,100	125,800	600	0.5%	6,900	5.5%
20237000	Heavy and Civil Engineering Construction	77,600	77,800	79,100	-200	-0.3%	-1,500	-1.9%
20238000	Specialty Trade Contractors	430,200	428,100	413,300	2,100	0.5%	16,900	4.1%
20238200	Building Equipment Contractors	190,800	190,300	179,500	500	0.3%	11,300	6.3%
30000000	Manufacturing	426,200	424,000	417,300	2,200	0.5%	8,900	2.1%
31000000	Durable Goods	291,900	288,900	287,000	3,000	1.0%	4,900	1.7%
31332000	Fabricated Metal Product Manufacturing	46,300	45,900	44,700	400	0.9%	1,600	3.6%
31334000	Computer and Electronic Product Manufacturing	47,600	47,500	46,200	100	0.2%	1,400	3.0%
31334200	Communications Equipment Manufacturing	5,600	5,600	5,600	0	0.0%	0	0.0%
31336000	Transportation Equipment Manufacturing	57,200	56,800	56,500	400	0.7%	700	1.2%
31336400	Aerospace Product and Parts Manufacturing	32,400	32,200	30,900	200	0.6%	1,500	4.9%
31339000	Miscellaneous Manufacturing	37,000	36,600	36,300	400	1.1%	700	1.9%
32000000	Non-Durable Goods	134,300	135,100	130,300	-800	-0.6%	4,000	3.1%
32311000	Food Manufacturing	38,200	38,300	36,800	-100	-0.3%	1,400	3.8%
32312000	Beverage and Tobacco Product Manufacturing	14,200	14,300	14,000	-100	-0.7%	200	1.4%
32322000	Paper Manufacturing	8,100	8,100	8,000	0	0.0%	100	1.3%
32323000	Printing and Related Support Activities	16,500	16,500	16,400	0	0.0%	100	0.6%
32325000	Chemical Manufacturing	28,200	28,300	27,700	-100	-0.4%	500	1.8%
40000000	Trade, Transportation, and Utilities	1,996,000	2,001,100	1,948,300	-5,100	-0.3%	47,700	2.4%
<b>41000000</b>	<b>Wholesale Trade</b>	<b>400,700</b>	<b>397,300</b>	<b>385,500</b>	<b>3,400</b>	<b>0.9%</b>	<b>15,200</b>	<b>3.9%</b>
41423000	Merchant Wholesalers, Durable Goods	217,500	215,500	210,500	2,000	0.9%	7,000	3.3%
41423400	Professional and Commercial Equipment and Supplies Merchant Wholesalers	60,200	58,400	57,900	1,800	3.1%	2,300	4.0%
41423600	Household Appliances and Electrical and Electronic Goods Merchant Wholesalers	25,200	25,300	24,700	-100	-0.4%	500	2.0%
41423800	Machinery, Equipment, and Supplies Merchant Wholesalers	38,100	37,700	36,800	400	1.1%	1,300	3.5%
41424000	Merchant Wholesalers, Nondurable Goods	158,200	156,800	150,400	1,400	0.9%	7,800	5.2%
41424400	Grocery and Related Product Merchant Wholesalers	64,700	63,300	61,300	1,400	2.2%	3,400	5.5%
41425000	Wholesale Trade Agents and Brokers	25,000	25,000	24,600	0	0.0%	400	1.6%
<b>42000000</b>	<b>Retail Trade</b>	<b>1,164,500</b>	<b>1,170,000</b>	<b>1,137,800</b>	<b>-5,500</b>	<b>-0.5%</b>	<b>26,700</b>	<b>2.3%</b>
42441000	Motor Vehicle and Parts Dealers	165,900	161,700	158,500	4,200	2.6%	7,400	4.7%
42441100	Automobile Dealers	103,600	101,600	99,200	2,000	2.0%	4,400	4.4%
42444000	Building Material and Garden Equipment and Supplies Dealers	99,900	99,500	101,600	400	0.4%	-1,700	-1.7%
42445000	Food and Beverage Retailers	268,900	268,200	259,400	700	0.3%	9,500	3.7%

Source: U.S. Department of Labor, Bureau of Labor Statistics, Current Employment Statistics Program.

Prepared by: Florida Department of Commerce, Bureau of Workforce Statistics and Economic Research.

**NONAGRICULTURAL EMPLOYMENT IN FLORIDA  
STATEWIDE (Not Seasonally Adjusted)**

Released March 22, 2024

Series	Industry Title	February 2024	January 2024	February 2023	Change from		Jan 2024 to Feb 2024 Level	Feb 2023 to Feb 2024 Level	Percent	Percent
					Level	Percent				
42449000	Furniture, Home Furnishings, Electronics, and Appliance Retailers	66,500	67,500	70,700	-1,000	-1.5%	-4,200	-5.9%		
42449100	Furniture and Home Furnishings Retailers	35,200	36,100	36,700	-900	-2.5%	-1,500	-4.1%		
42449200	Electronics and Appliance Retailers	31,300	31,400	34,000	-100	-0.3%	-2,700	-7.9%		
42455000	General Merchandise Retailers	224,800	226,000	216,100	-1,200	-0.5%	8,700	4.0%		
42455100	Department Stores	68,100	69,500	66,300	-1,400	-2.0%	1,800	2.7%		
42455200	Warehouse Clubs, Supercenters, and Other General Merchandise Retailers	156,700	156,500	149,800	200	0.1%	6,900	4.6%		
42456000	Health and Personal Care Retailers	88,300	91,100	89,000	-2,800	-3.1%	-700	-0.8%		
42457000	Gasoline Stations and Fuel Dealers	50,100	50,100	48,900	0	0.0%	1,200	2.5%		
42458000	Clothing, Clothing Accessories, Shoe, and Jewelry Retailers	96,100	99,600	93,200	-3,500	-3.5%	2,900	3.1%		
42459000	Sporting Goods, Hobby, Musical Instrument, Book, and Miscellaneous Retailers	104,000	106,300	100,400	-2,300	-2.2%	3,600	3.6%		
<b>43000000</b>	<b>Transportation, Warehousing, and Utilities</b>	<b>430,800</b>	<b>433,800</b>	<b>425,000</b>	<b>-3,000</b>	<b>-0.7%</b>	<b>5,800</b>	<b>1.4%</b>		
43220000	Utilities	25,900	26,000	24,700	-100	-0.4%	1,200	4.9%		
43400089	Transportation and Warehousing	404,900	407,800	400,300	-2,900	-0.7%	4,600	1.1%		
43481000	Air Transportation	61,200	61,100	57,300	100	0.2%	3,900	6.8%		
43483000	Water Transportation	19,000	18,900	18,200	100	0.5%	800	4.4%		
43484000	Truck Transportation	68,200	69,700	68,100	-1,500	-2.2%	100	0.1%		
43488000	Support Activities for Transportation	70,400	71,200	71,600	-800	-1.1%	-1,200	-1.7%		
43492000	Couriers and Messengers	63,400	65,700	63,400	-2,300	-3.5%	0	0.0%		
43493000	Warehousing and Storage	97,800	96,900	97,700	900	0.9%	100	0.1%		
50000000	Information	158,500	157,500	160,500	1,000	0.6%	-2,000	-1.2%		
50513000	Publishing Industries	42,600	42,400	43,400	200	0.5%	-800	-1.8%		
50516000	Broadcasting and Content Providers	17,300	17,200	16,900	100	0.6%	400	2.4%		
50517000	Telecommunications	46,200	46,300	48,000	-100	-0.2%	-1,800	-3.8%		
50517111	Wired Telecommunications Carriers	35,300	35,100	35,900	200	0.6%	-600	-1.7%		
50518000	Computing Infrastructure Providers, Data Processing, Web Hosting, and Related	30,000	30,000	29,600	0	0.0%	400	1.4%		
55000000	Financial Activities	680,300	683,300	676,000	-3,000	-0.4%	4,300	0.6%		
<b>55200000</b>	<b>Finance and Insurance</b>	<b>462,400</b>	<b>465,500</b>	<b>462,100</b>	<b>-3,100</b>	<b>-0.7%</b>	<b>300</b>	<b>0.1%</b>		
55222000	Credit Intermediation and Related Activities including Monetary Authorities - Cent	178,500	179,300	183,000	-800	-0.4%	-4,500	-2.5%		
55222100	Depository Credit Intermediation including Monetary Authorities - Central Bank	119,400	119,100	122,600	300	0.3%	-3,200	-2.6%		
55240000	Insurance Carriers and Related Activities	220,400	223,100	216,100	-2,700	-1.2%	4,300	2.0%		
55241000	Insurance Carriers	102,300	104,900	102,700	-2,600	-2.5%	-400	-0.4%		
55242000	Agencies, Brokerages, and Other Insurance Related Activities	118,100	118,200	113,400	-100	-0.1%	4,700	4.1%		
<b>55300000</b>	<b>Real Estate and Rental and Leasing</b>	<b>217,900</b>	<b>217,800</b>	<b>213,900</b>	<b>100</b>	<b>0.0%</b>	<b>4,000</b>	<b>1.9%</b>		
55310000	Real Estate	167,400	167,500	165,800	-100	-0.1%	1,600	1.0%		
60000000	Professional and Business Services	1,618,900	1,609,400	1,618,200	9,500	0.6%	700	0.0%		
<b>60540000</b>	<b>Professional, Scientific, and Technical Services</b>	<b>750,400</b>	<b>743,900</b>	<b>732,300</b>	<b>6,500</b>	<b>0.9%</b>	<b>18,100</b>	<b>2.5%</b>		
60541100	Legal Services	114,000	112,900	109,600	1,100	1.0%	4,400	4.0%		
60541200	Accounting, Tax Preparation, Bookkeeping, and Payroll Services	89,800	89,000	91,700	800	0.9%	-1,900	-2.1%		
60541300	Architectural, Engineering, and Related Services	109,600	108,500	103,800	1,100	1.0%	5,800	5.6%		
60541500	Computer Systems Design and Related Services	140,400	139,400	139,000	1,000	0.7%	1,400	1.0%		
60541600	Management, Scientific, and Technical Consulting Services	154,700	155,200	156,000	-500	-0.3%	-1,300	-0.8%		

Source: U.S. Department of Labor, Bureau of Labor Statistics, Current Employment Statistics Program.

Prepared by: Florida Department of Commerce, Bureau of Workforce Statistics and Economic Research.



**NONAGRICULTURAL EMPLOYMENT IN FLORIDA  
STATEWIDE (Not Seasonally Adjusted)**

Released March 22, 2024

Series	Industry Title	February 2024	January 2024	February 2023	Change from		Jan 2024 to Feb 2024 Level	Feb 2023 to Feb 2024 Level	Percent	Percent
					Level	Percent				
<b>60550000</b>	<b>Management of Companies and Enterprises</b>	<b>134,000</b>	<b>134,300</b>	<b>132,400</b>	<b>-300</b>	<b>-0.2%</b>	<b>1,600</b>	<b>1.2%</b>		
<b>60560000</b>	<b>Administrative and Support and Waste Management and Remediation Services</b>	<b>734,500</b>	<b>731,200</b>	<b>753,500</b>	<b>3,300</b>	<b>0.5%</b>	<b>-19,000</b>	<b>-2.5%</b>		
60561000	Administrative and Support Services	702,600	699,500	721,800	3,100	0.4%	-19,200	-2.7%		
60561300	Employment Services	226,700	229,000	263,100	-2,300	-1.0%	-36,400	-13.8%		
60561400	Business Support Services	74,600	74,600	78,900	0	0.0%	-4,300	-5.4%		
60561500	Travel Arrangement and Reservation Services	27,300	27,200	27,800	100	0.4%	-500	-1.8%		
60561600	Investigation and Security Services	76,700	76,500	77,500	200	0.3%	-800	-1.0%		
60561700	Services to Buildings and Dwellings	207,200	203,800	191,000	3,400	1.7%	16,200	8.5%		
60562000	Waste Management and Remediation Services	31,900	31,700	31,700	200	0.6%	200	0.6%		
65000000	Private Education and Health Services	1,514,200	1,502,600	1,457,800	11,600	0.8%	56,400	3.9%		
<b>65610000</b>	<b>Private Educational Services</b>	<b>212,200</b>	<b>201,800</b>	<b>205,200</b>	<b>10,400</b>	<b>5.2%</b>	<b>7,000</b>	<b>3.4%</b>		
65611100	Private Elementary and Secondary Schools	87,700	85,600	81,000	2,100	2.5%	6,700	8.3%		
65611300	Private Colleges, Universities, and Professional Schools	64,600	60,200	64,600	4,400	7.3%	0	0.0%		
<b>65620000</b>	<b>Health Care and Social Assistance</b>	<b>1,302,000</b>	<b>1,300,800</b>	<b>1,252,600</b>	<b>1,200</b>	<b>0.1%</b>	<b>49,400</b>	<b>3.9%</b>		
65621000	Ambulatory Health Care Services	598,700	599,400	585,800	-700	-0.1%	12,900	2.2%		
65621100	Offices of Physicians	254,900	255,100	248,500	-200	-0.1%	6,400	2.6%		
65621600	Home Health Care Services	81,300	81,000	79,100	300	0.4%	2,200	2.8%		
65622000	Hospitals	359,000	358,900	335,200	100	0.0%	23,800	7.1%		
<b>65623000</b>	<b>Nursing and Residential Care Facilities</b>	<b>187,500</b>	<b>188,200</b>	<b>178,700</b>	<b>-700</b>	<b>-0.4%</b>	<b>8,800</b>	<b>4.9%</b>		
65623100	Nursing Care Facilities (Skilled Nursing Facilities)	86,100	85,900	82,200	200	0.2%	3,900	4.7%		
65623300	Continuing Care Retirement Communities and Assisted Living Facilities for the Elderly	68,300	68,600	65,800	-300	-0.4%	2,500	3.8%		
65624000	Social Assistance	156,800	154,300	152,900	2,500	1.6%	3,900	2.6%		
70000000	Leisure and Hospitality	1,331,600	1,313,700	1,295,100	17,900	1.4%	36,500	2.8%		
<b>70710000</b>	<b>Arts, Entertainment, and Recreation</b>	<b>263,400</b>	<b>260,700</b>	<b>253,900</b>	<b>2,700</b>	<b>1.0%</b>	<b>9,500</b>	<b>3.7%</b>		
70713000	Amusement, Gambling, and Recreation Industries	205,900	203,500	202,700	2,400	1.2%	3,200	1.6%		
70713100	Amusement Parks and Arcades	84,900	84,100	82,800	800	1.0%	2,100	2.5%		
<b>70720000</b>	<b>Accommodation and Food Services</b>	<b>1,068,200</b>	<b>1,053,000</b>	<b>1,041,200</b>	<b>15,200</b>	<b>1.4%</b>	<b>27,000</b>	<b>2.6%</b>		
70721000	Accommodation	193,500	193,400	181,000	100	0.1%	12,500	6.9%		
70722000	Food Services and Drinking Places	874,700	859,600	860,200	15,100	1.8%	14,500	1.7%		
80000000	Other Services	373,700	372,600	362,400	1,100	0.3%	11,300	3.1%		
80811000	Repair and Maintenance	94,200	95,400	92,100	-1,200	-1.3%	2,100	2.3%		
80811100	Automotive Repair and Maintenance	61,800	62,100	61,000	-300	-0.5%	800	1.3%		
80812000	Personal and Laundry Services	106,800	106,100	105,900	700	0.7%	900	0.8%		
80813000	Religious, Grantmaking, Civic, Professional, and Similar Organizations	172,700	171,100	164,400	1,600	0.9%	8,300	5.0%		
90000000	Government	1,165,600	1,151,300	1,133,500	14,300	1.2%	32,100	2.8%		
<b>90910000</b>	<b>Federal Government</b>	<b>159,800</b>	<b>158,400</b>	<b>152,700</b>	<b>1,400</b>	<b>0.9%</b>	<b>7,100</b>	<b>4.6%</b>		
<b>90920000</b>	<b>State Government</b>	<b>256,900</b>	<b>248,900</b>	<b>248,300</b>	<b>8,000</b>	<b>3.2%</b>	<b>8,600</b>	<b>3.5%</b>		
90921611	State Government Educational Services	147,100	139,800	142,400	7,300	5.2%	4,700	3.3%		
90922000	State Government Excluding Education	109,800	109,100	105,900	700	0.6%	3,900	3.7%		
<b>90930000</b>	<b>Local Government</b>	<b>748,900</b>	<b>744,000</b>	<b>732,500</b>	<b>4,900</b>	<b>0.7%</b>	<b>16,400</b>	<b>2.2%</b>		
90931611	Local Government Educational Services	352,400	349,200	351,300	3,200	0.9%	1,100	0.3%		

Source: U.S. Department of Labor, Bureau of Labor Statistics, Current Employment Statistics Program.

Prepared by: Florida Department of Commerce, Bureau of Workforce Statistics and Economic Research.



**NONAGRICULTURAL EMPLOYMENT IN FLORIDA  
STATEWIDE (Not Seasonally Adjusted)**

Released March 22, 2024

Series	Industry Title	February 2024	January 2024	February 2023	Jan 2024 to Feb 2024 Level	Change from	
						Feb 2023 to Feb 2024 Level	Feb 2023 to Feb 2024 Percent
90932000	Local Government excluding Educational Services	396,500	394,800	381,200	1,700	15,300	4.0%

Note: Employment estimates have been rounded to the nearest hundred. Sum of detail may not equal totals due to rounding or the exclusion of certain industries from publication. All data are subject to revision.

STATE OF FLORIDA  
LOCAL AREA UNEMPLOYMENT STATISTICS BY COUNTY  
(NOT SEASONALLY ADJUSTED)

COUNTY	FEBRUARY 2024				JANUARY 2024				FEBRUARY 2023			
	LABOR FORCE	EMPLOY- MENT	UNEMPLOYMENT LEVEL	UNEMPLOYMENT RATE	LABOR FORCE	EMPLOY- MENT	UNEMPLOYMENT LEVEL	UNEMPLOYMENT RATE	LABOR FORCE	EMPLOY- MENT	UNEMPLOYMENT LEVEL	UNEMPLOYMENT RATE
Alachua County	146,056	141,172	4,884	3.3%	145,030	140,164	4,866	3.4%	143,615	139,660	3,955	2.8%
Baker County	12,894	12,482	412	3.2%	12,876	12,472	404	3.1%	12,629	12,291	338	2.7%
Bay County	89,145	86,254	2,891	3.2%	88,874	85,790	3,084	3.5%	86,867	84,541	2,326	2.7%
Bradford County	10,999	10,600	399	3.6%	10,927	10,547	380	3.5%	10,858	10,545	313	2.9%
Brevard County	307,284	297,034	10,250	3.3%	307,473	297,176	10,297	3.3%	300,534	292,205	8,329	2.8%
Broward County	1,094,428	1,060,285	34,143	3.1%	1,094,290	1,060,269	34,021	3.1%	1,071,437	1,042,732	28,705	2.7%
Calhoun County	5,077	4,892	185	3.6%	5,078	4,896	182	3.6%	4,942	4,782	160	3.2%
Charlotte County	79,346	76,285	3,061	3.9%	78,990	75,962	3,028	3.8%	78,242	75,612	2,630	3.4%
Citrus County	49,768	47,200	2,568	5.2%	49,695	47,103	2,592	5.2%	49,703	47,661	2,042	4.1%
Clay County	115,513	111,754	3,759	3.3%	115,444	111,686	3,758	3.3%	112,864	109,853	3,011	2.7%
Collier County	196,798	190,887	5,911	3.0%	196,566	190,608	5,958	3.0%	192,959	187,920	5,039	2.6%
Columbia County	30,099	28,981	1,118	3.7%	30,087	28,946	1,141	3.8%	29,777	28,864	913	3.1%
DeSoto County	13,461	12,916	545	4.0%	13,467	12,926	541	4.0%	13,278	12,827	451	3.4%
Dixie County	6,078	5,836	242	4.0%	6,041	5,782	259	4.3%	5,974	5,779	195	3.3%
Duval County	521,817	503,950	17,867	3.4%	521,075	503,421	17,654	3.4%	510,457	495,729	14,728	2.9%
Escambia County	154,006	148,653	5,353	3.5%	153,754	148,370	5,384	3.5%	150,242	145,932	4,310	2.9%
Flagler County	51,858	49,737	2,121	4.1%	51,749	49,622	2,127	4.1%	50,773	49,016	1,757	3.5%
Franklin County	4,833	4,669	164	3.4%	4,786	4,613	173	3.6%	4,632	4,503	129	2.8%
Gadsden County	18,849	18,121	728	3.9%	18,783	18,037	746	4.0%	18,646	17,951	695	3.7%
Gilchrist County	7,602	7,314	288	3.8%	7,525	7,259	266	3.5%	7,444	7,229	215	2.9%
Glades County	5,222	5,008	214	4.1%	5,201	4,984	217	4.2%	5,183	5,016	167	3.2%
Gulf County	5,460	5,301	159	2.9%	5,439	5,273	166	3.1%	5,331	5,202	129	2.4%
Hamilton County	4,227	4,035	192	4.5%	4,186	4,002	184	4.4%	4,199	4,039	160	3.8%
Hardee County	9,387	8,979	408	4.3%	9,329	8,942	387	4.1%	8,968	8,633	335	3.7%
Hendry County	16,088	15,358	730	4.5%	16,045	15,303	742	4.6%	15,856	15,245	611	3.9%
Hernando County	79,350	75,883	3,467	4.4%	79,157	75,721	3,436	4.3%	77,407	74,690	2,717	3.5%
Highlands County	37,421	35,642	1,779	4.8%	37,448	35,687	1,761	4.7%	37,325	35,865	1,460	3.9%
Hillsborough County	827,538	800,738	26,800	3.2%	826,484	799,653	26,831	3.2%	811,424	789,754	21,670	2.7%
Holmes County	7,259	6,982	277	3.8%	7,269	6,994	275	3.8%	7,024	6,809	215	3.1%
Indian River County	70,158	67,472	2,686	3.8%	70,050	67,335	2,715	3.9%	69,650	67,442	2,208	3.2%
Jackson County	17,619	16,917	702	4.0%	17,599	16,895	704	4.0%	17,303	16,781	522	3.0%
Jefferson County	5,906	5,692	214	3.6%	5,854	5,651	203	3.5%	5,731	5,564	167	2.9%
Lafayette County	2,868	2,761	107	3.7%	2,845	2,740	105	3.7%	2,840	2,756	84	3.0%
Lake County	178,248	171,971	6,277	3.5%	177,962	171,652	6,310	3.5%	174,623	169,562	5,061	2.9%
Lee County	382,742	369,974	12,768	3.3%	380,122	367,348	12,774	3.4%	375,495	363,876	11,619	3.1%
Leon County	165,326	159,932	5,394	3.3%	164,208	158,864	5,344	3.3%	160,493	155,921	4,572	2.8%
Levy County	17,656	16,978	678	3.8%	17,598	16,901	697	4.0%	17,423	16,859	564	3.2%
Liberty County	2,698	2,596	102	3.8%	2,682	2,582	100	3.7%	2,633	2,555	78	3.0%
Madison County	8,012	7,698	314	3.9%	7,954	7,655	299	3.8%	7,977	7,724	253	3.2%
Manatee County	195,103	188,457	6,646	3.4%	195,296	188,662	6,634	3.4%	191,289	185,948	5,341	2.8%
Marion County	152,494	146,217	6,277	4.1%	152,346	145,996	6,350	4.2%	150,354	145,295	5,059	3.4%
Martin County	78,602	76,069	2,533	3.2%	78,583	76,015	2,568	3.3%	77,158	75,098	2,060	2.7%

Source: U.S. Department of Labor, Bureau of Labor Statistics, Local Area Unemployment Statistics Program, in cooperation with the Florida Department of Commerce, Bureau of Workforce Statistics and Economic Research.

STATE OF FLORIDA  
LOCAL AREA UNEMPLOYMENT STATISTICS BY COUNTY  
(NOT SEASONALLY ADJUSTED)

COUNTY	FEBRUARY 2024				JANUARY 2024				FEBRUARY 2023			
	LABOR FORCE	EMPLOY- MENT	UNEMPLOYMENT LEVEL	UNEMPLOYMENT RATE	LABOR FORCE	EMPLOY- MENT	UNEMPLOYMENT LEVEL	UNEMPLOYMENT RATE	LABOR FORCE	EMPLOY- MENT	UNEMPLOYMENT LEVEL	UNEMPLOYMENT RATE
Miami-Dade County	1,402,527	1,379,706	22,821	1.6%	1,396,426	1,377,238	19,188	1.4%	1,377,876	1,353,302	24,574	1.8%
Monroe County	51,062	49,983	1,079	2.1%	50,674	49,603	1,071	2.1%	49,659	48,762	897	1.8%
Nassau County	45,649	44,217	1,432	3.1%	45,598	44,154	1,444	3.2%	44,677	43,497	1,180	2.6%
Okaloosa County	105,319	102,168	3,151	3.0%	105,050	101,866	3,184	3.0%	101,323	98,779	2,544	2.5%
Okeechobee County	18,291	17,676	615	3.4%	18,234	17,616	618	3.4%	17,844	17,322	522	2.9%
Orange County	822,036	796,716	25,320	3.1%	821,170	795,766	25,404	3.1%	806,861	785,490	21,371	2.6%
Osceola County	204,387	197,111	7,276	3.6%	204,352	196,901	7,451	3.6%	200,628	194,320	6,308	3.1%
Palm Beach County	783,252	757,791	25,461	3.3%	782,991	757,461	25,530	3.3%	771,646	750,429	21,217	2.7%
Pasco County	267,013	256,910	10,103	3.8%	266,562	256,498	10,064	3.8%	260,757	252,846	7,911	3.0%
Pinellas County	526,206	509,758	16,448	3.1%	525,368	508,913	16,455	3.1%	515,099	501,598	13,501	2.6%
Polk County	347,469	333,757	13,712	3.9%	346,820	332,921	13,899	4.0%	339,747	328,552	11,195	3.3%
Putnam County	29,243	27,987	1,256	4.3%	28,956	27,729	1,227	4.2%	27,737	26,675	1,062	3.8%
Santa Rosa County	90,434	87,506	2,928	3.2%	90,315	87,411	2,904	3.2%	88,243	85,921	2,322	2.6%
Sarasota County	204,558	197,585	6,973	3.4%	204,526	197,579	6,947	3.4%	200,478	194,851	5,627	2.8%
Seminole County	274,279	266,027	8,252	3.0%	273,812	265,566	8,246	3.0%	269,238	262,248	6,990	2.6%
St. Johns County	152,721	148,131	4,590	3.0%	152,357	147,824	4,533	3.0%	149,370	145,684	3,686	2.5%
St. Lucie County	160,571	154,344	6,227	3.9%	160,511	154,371	6,140	3.8%	157,562	152,459	5,103	3.2%
Sumter County	39,395	37,383	2,012	5.1%	39,366	37,374	1,992	5.1%	38,270	36,724	1,546	4.0%
Suwannee County	18,218	17,533	685	3.8%	18,117	17,424	693	3.8%	17,769	17,216	553	3.1%
Taylor County	8,715	8,327	388	4.5%	8,674	8,270	404	4.7%	8,097	7,835	262	3.2%
Union County	4,666	4,520	146	3.1%	4,680	4,521	159	3.4%	4,537	4,408	129	2.8%
Volusia County	273,110	263,344	9,766	3.6%	272,568	262,600	9,968	3.7%	267,712	259,510	8,202	3.1%
Wakulla County	16,467	15,992	475	2.9%	16,375	15,887	488	3.0%	16,036	15,629	407	2.5%
Walton County	35,738	34,609	1,129	3.2%	35,585	34,451	1,134	3.2%	34,422	33,485	937	2.7%
Washington County	10,079	9,717	362	3.6%	10,016	9,643	373	3.7%	9,632	9,334	298	3.1%
Florida (Not Seasonally Adjusted)	11,077,000	10,728,000	348,000	3.1%	11,055,000	10,710,000	345,000	3.1%	10,857,000	10,563,000	294,000	2.7%
Florida (Seasonally Adjusted)	11,089,000	10,744,000	345,000	3.1%	11,077,000	10,737,000	340,000	3.1%	10,872,000	10,571,000	301,000	2.8%
United States (Not Seasonally Adjusted)	167,285,000	160,315,000	6,970,000	4.2%	166,428,000	159,650,000	6,778,000	4.1%	166,178,000	159,713,000	6,465,000	3.9%
United States (Seasonally Adjusted)	167,426,000	160,968,000	6,458,000	3.9%	167,276,000	161,152,000	6,124,000	3.7%	166,263,000	160,301,000	5,962,000	3.6%

Released: Friday, March 22, 2024

NOTE: Items may not add to totals or compute to displayed percentages due to rounding. All data are subject to revision.

Source: U.S. Department of Labor, Bureau of Labor Statistics, Local Area Unemployment Statistics Program, in cooperation with the Florida Department of Commerce, Bureau of Workforce Statistics and Economic Research.

STATE OF FLORIDA  
LOCAL AREA UNEMPLOYMENT STATISTICS BY METROPOLITAN STATISTICAL AREA (MSA) AND METROPOLITAN DIVISION (MD)  
(NOT SEASONALLY ADJUSTED)

MSA/MD	FEBRUARY 2024				JANUARY 2024				FEBRUARY 2023			
	LABOR FORCE	EMPLOYMENT	UNEMPLOYMENT LEVEL	UNEMPLOYMENT RATE	LABOR FORCE	EMPLOYMENT	UNEMPLOYMENT LEVEL	UNEMPLOYMENT RATE	LABOR FORCE	EMPLOYMENT	UNEMPLOYMENT LEVEL	UNEMPLOYMENT RATE
Cape Coral-Fort Myers MSA	382,742	369,974	12,768	3.3%	380,122	367,348	12,774	3.4%	375,495	363,876	11,619	3.1%
Crestview-Fort Walton Beach-Destin MSA	141,057	136,777	4,280	3.0%	140,635	136,317	4,318	3.1%	135,745	132,264	3,481	2.6%
Deltona-Daytona Beach-Ormond Beach MSA	324,968	313,081	11,887	3.7%	324,317	312,222	12,095	3.7%	318,485	308,526	9,959	3.1%
Gainesville MSA	153,658	148,486	5,172	3.4%	152,555	147,423	5,132	3.4%	151,059	146,889	4,170	2.8%
Homosassa Springs MSA	49,768	47,200	2,568	5.2%	49,695	47,103	2,592	5.2%	49,703	47,661	2,042	4.1%
Jacksonville MSA	848,594	820,534	28,060	3.3%	847,350	819,557	27,793	3.3%	829,997	807,054	22,943	2.8%
Lakeland-Winter Haven MSA	347,469	333,757	13,712	3.9%	346,820	332,921	13,899	4.0%	339,747	328,552	11,195	3.3%
Miami-Fort Lauderdale-West Palm Beach MSA	3,280,207	3,197,782	82,425	2.5%	3,273,707	3,194,968	78,739	2.4%	3,220,959	3,146,463	74,496	2.3%
Fort Lauderdale-Pompano Beach-Deerfield Beach MD	1,094,428	1,060,285	34,143	3.1%	1,094,290	1,060,269	34,021	3.1%	1,071,437	1,042,732	28,705	2.7%
Miami-Miami Beach-Kendall MD	1,402,527	1,379,706	22,821	1.6%	1,396,426	1,377,238	19,188	1.4%	1,377,876	1,353,302	24,574	1.8%
West Palm Beach-Boca Raton-Delray Beach MD	783,252	757,791	25,461	3.3%	782,991	757,461	25,530	3.3%	771,646	750,429	21,217	2.7%
Naples-Immokalee-Marco Island MSA	196,798	190,887	5,911	3.0%	196,566	190,608	5,958	3.0%	192,959	187,920	5,039	2.6%
North Port-Sarasota-Bradenton MSA	399,661	386,042	13,619	3.4%	399,822	386,241	13,581	3.4%	391,767	380,799	10,968	2.8%
Ocala MSA	152,494	146,217	6,277	4.1%	152,346	145,996	6,350	4.2%	150,354	145,295	5,059	3.4%
Orlando-Kissimmee-Sanford MSA	1,478,950	1,431,825	47,125	3.2%	1,477,296	1,429,885	47,411	3.2%	1,451,350	1,411,620	39,730	2.7%
Palm Bay-Melbourne-Titusville MSA	307,284	297,034	10,250	3.3%	307,473	297,176	10,297	3.3%	300,534	292,205	8,329	2.8%
Panama City MSA	94,605	91,555	3,050	3.2%	94,313	91,063	3,250	3.4%	92,198	89,743	2,455	2.7%
Pensacola-Ferry Pass-Brent MSA	244,440	236,159	8,281	3.4%	244,069	235,781	8,288	3.4%	238,485	231,853	6,632	2.8%
Port St. Lucie MSA	239,173	230,413	8,760	3.7%	239,094	230,386	8,708	3.6%	234,720	227,557	7,163	3.1%
Punta Gorda MSA	79,346	76,285	3,061	3.9%	78,990	75,962	3,028	3.8%	78,242	75,612	2,630	3.4%
Sebastian-Vero Beach MSA	70,158	67,472	2,686	3.8%	70,050	67,335	2,715	3.9%	69,650	67,442	2,208	3.2%
Sebring MSA	37,421	35,642	1,779	4.8%	37,448	35,687	1,761	4.7%	37,325	35,865	1,460	3.9%
Tallahassee MSA	206,548	199,737	6,811	3.3%	205,220	198,439	6,781	3.3%	200,906	195,065	5,841	2.9%
Tampa-St. Petersburg-Clearwater MSA	1,700,107	1,643,289	56,818	3.3%	1,697,571	1,640,785	56,786	3.3%	1,664,687	1,618,888	45,799	2.8%
The Villages MSA	39,395	37,383	2,012	5.1%	39,366	37,374	1,992	5.1%	38,270	36,724	1,546	4.0%
Florida (Not Seasonally Adjusted)	11,077,000	10,728,000	348,000	3.1%	11,055,000	10,710,000	345,000	3.1%	10,857,000	10,563,000	294,000	2.7%
Florida (Seasonally Adjusted)	11,089,000	10,744,000	345,000	3.1%	11,077,000	10,737,000	340,000	3.1%	10,872,000	10,571,000	301,000	2.8%
United States (Not Seasonally Adjusted)	167,285,000	160,315,000	6,970,000	4.2%	166,428,000	159,650,000	6,778,000	4.1%	166,178,000	159,713,000	6,465,000	3.9%
United States (Seasonally Adjusted)	167,426,000	160,968,000	6,458,000	3.9%	167,276,000	161,152,000	6,124,000	3.7%	166,263,000	160,301,000	5,962,000	3.6%

Released: Friday, March 22, 2024

NOTE: Items may not add to totals or compute to displayed percentages due to rounding. All data are subject to revision.

Source: U.S. Department of Labor, Bureau of Labor Statistics, Local Area Unemployment Statistics Program, in cooperation with the Florida Department of Commerce, Bureau of Workforce Statistics and Economic Research.

STATE OF FLORIDA  
COUNTIES RANKED BY UNEMPLOYMENT RATE  
(NOT SEASONALLY ADJUSTED)  
FEBRUARY 2024 (PRELIMINARY)

1	Citrus County	5.2%
2	Sumter County	5.1%
3	Highlands County	4.8%
4	Hamilton County	4.5%
4	Hendry County	4.5%
4	Taylor County	4.5%
7	Hernando County	4.4%
8	Hardee County	4.3%
8	Putnam County	4.3%
	<b>United States</b>	<b>4.2%</b>
10	Flagler County	4.1%
10	Glades County	4.1%
10	Marion County	4.1%
13	DeSoto County	4.0%
13	Dixie County	4.0%
13	Jackson County	4.0%
16	Charlotte County	3.9%
16	Gadsden County	3.9%
16	Madison County	3.9%
16	Polk County	3.9%
16	St. Lucie County	3.9%
21	Gilchrist County	3.8%
21	Holmes County	3.8%
21	Indian River County	3.8%
21	Levy County	3.8%
21	Liberty County	3.8%
21	Pasco County	3.8%
21	Suwannee County	3.8%
28	Columbia County	3.7%
28	Lafayette County	3.7%
30	Bradford County	3.6%
30	Calhoun County	3.6%
30	Jefferson County	3.6%
30	Osceola County	3.6%
30	Volusia County	3.6%
30	Washington County	3.6%
36	Escambia County	3.5%
36	Lake County	3.5%
38	Duval County	3.4%
38	Franklin County	3.4%
38	Manatee County	3.4%

STATE OF FLORIDA  
COUNTIES RANKED BY UNEMPLOYMENT RATE  
(NOT SEASONALLY ADJUSTED)  
FEBRUARY 2024 (PRELIMINARY)

38	Okeechobee County	3.4%
38	Sarasota County	3.4%
43	Alachua County	3.3%
43	Brevard County	3.3%
43	Clay County	3.3%
43	Lee County	3.3%
43	Leon County	3.3%
43	Palm Beach County	3.3%
49	Baker County	3.2%
49	Bay County	3.2%
49	Hillsborough County	3.2%
49	Martin County	3.2%
49	Santa Rosa County	3.2%
49	Walton County	3.2%
55	Broward County	3.1%
55	Nassau County	3.1%
55	Orange County	3.1%
55	Pinellas County	3.1%
55	Union County	3.1%
	<b>Florida</b>	<b>3.1%</b>
60	Collier County	3.0%
60	Okaloosa County	3.0%
60	St. Johns County	3.0%
60	Seminole County	3.0%
64	Gulf County	2.9%
64	Wakulla County	2.9%
66	Monroe County	2.1%
67	Miami-Dade County	1.6%

Source: U.S. Department of Labor, Bureau of Labor Statistics, Local Area Unemployment Statistics Program, in cooperation with the Florida Department of Commerce, Bureau of Workforce Statistics and Economic Research.  
Released: Friday, March 22, 2024

NOTE: All data are subject to revision.

STATE OF FLORIDA  
 METROPOLITAN STATISTICAL AREAS (MSAs) AND METROPOLITAN DIVISIONS (MDs)  
 RANKED BY UNEMPLOYMENT RATE  
 (NOT SEASONALLY ADJUSTED)  
 FEBRUARY 2024 (PRELIMINARY)

1	Homosassa Springs MSA	5.2%
2	The Villages MSA	5.1%
3	Sebring MSA	4.8%
	<b>United States</b>	<b>4.2%</b>
4	Ocala MSA	4.1%
5	Lakeland-Winter Haven MSA	3.9%
5	Punta Gorda MSA	3.9%
7	Sebastian-Vero Beach MSA	3.8%
8	Deltona-Daytona Beach-Ormond Beach MSA	3.7%
8	Port St. Lucie MSA	3.7%
10	Gainesville MSA	3.4%
10	North Port-Sarasota-Bradenton MSA	3.4%
10	Pensacola-Ferry Pass-Brent MSA	3.4%
13	Cape Coral-Fort Myers MSA	3.3%
13	Jacksonville MSA	3.3%
13	Palm Bay-Melbourne-Titusville MSA	3.3%
13	Tallahassee MSA	3.3%
13	Tampa-St. Petersburg-Clearwater MSA	3.3%
13	West Palm Beach-Boca Raton-Delray Beach MD	3.3%
19	Orlando-Kissimmee-Sanford MSA	3.2%
19	Panama City MSA	3.2%
21	Fort Lauderdale-Pompano Beach-Deerfield Beach MD	3.1%
	<b>Florida</b>	<b>3.1%</b>
22	Crestview-Fort Walton Beach-Destin MSA	3.0%
22	Naples-Immokalee-Marco Island MSA	3.0%
24	Miami-Miami Beach-Kendall MD	1.6%

Released: Friday, March 22, 2024

NOTE: All data are subject to revision.



TOTAL NONAGRICULTURAL EMPLOYMENT  
FLORIDA (Not Seasonally Adjusted)

Area	February 2024	January 2024	February 2023	Over-the-Month Change		Over-the-Year Change	
				Level	Percent	Level	Percent
Statewide	9,911,500	9,859,400	9,693,000	52,100	0.5%	218,500	2.3%
Cape Coral-Fort Myers MSA	311,300	308,300	305,200	3,000	1.0%	6,100	2.0%
Crestview-Fort Walton Beach-Destin MSA	132,000	131,200	127,000	800	0.6%	5,000	3.9%
Deltona-Daytona Beach-Ormond Beach MSA	226,300	225,000	222,300	1,300	0.6%	4,000	1.8%
Fort Lauderdale-Pompano Beach-Deerfield Beach MD	925,200	922,300	908,600	2,900	0.3%	16,600	1.8%
Gainesville MSA	158,300	156,300	156,300	2,000	1.3%	2,000	1.3%
Homosassa Springs MSA	35,500	35,400	35,800	100	0.3%	-300	-0.8%
Jacksonville MSA	799,300	795,300	783,300	4,000	0.5%	16,000	2.0%
Lakeland-Winter Haven MSA	276,700	275,000	271,300	1,700	0.6%	5,400	2.0%
Miami-Ft. Lauderdale-West Palm Beach MSA	2,947,400	2,942,700	2,886,100	4,700	0.2%	61,300	2.1%
Miami-Miami Beach-Kendall MD	1,324,500	1,325,100	1,288,900	-600	*	35,600	2.8%
Naples-Immokalee-Marco Island MSA	176,300	175,500	172,400	800	0.5%	3,900	2.3%
North Port-Sarasota-Bradenton MSA	346,600	345,800	340,700	800	0.2%	5,900	1.7%
Ocala MSA	121,100	120,500	119,900	600	0.5%	1,200	1.0%
Orlando-Kissimmee-Sanford MSA	1,475,900	1,467,800	1,449,800	8,100	0.6%	26,100	1.8%
Palm Bay-Melbourne-Titusville MSA	256,600	255,700	251,400	900	0.4%	5,200	2.1%
Panama City MSA	87,700	87,200	85,600	500	0.6%	2,100	2.5%
Pensacola-Ferry Pass-Brent MSA	202,800	201,700	198,400	1,100	0.5%	4,400	2.2%
Port St. Lucie MSA	174,100	173,600	171,300	500	0.3%	2,800	1.6%
Punta Gorda MSA	56,500	56,300	56,000	200	0.4%	500	0.9%
Sebastian-Vero Beach MSA	59,200	58,800	59,000	400	0.7%	200	0.3%
Sebring MSA	28,400	28,300	28,300	100	0.4%	100	0.4%
Tallahassee MSA	202,500	200,300	196,700	2,200	1.1%	5,800	2.9%
Tampa-St. Petersburg-Clearwater MSA	1,549,000	1,541,100	1,519,400	7,900	0.5%	29,600	1.9%
The Villages MSA	40,500	40,400	39,500	100	0.2%	1,000	2.5%
West Palm Beach-Boca Raton-Delray Beach MD	697,700	695,300	688,600	2,400	0.3%	9,100	1.3%

\* - less than 0.1 percent

Note: Employment estimates have been rounded to the nearest hundred. Sum of detail may not equal totals due to rounding or the exclusion of certain industries from publication. All data are subject to revision. March 22, 2024.

**Total Nonagricultural Employment  
Florida and Selected Metropolitan Statistical Areas (MSAs) and Metropolitan Divisions (MDs)**

**Seasonally Adjusted**

Area	February 2024	January 2024	February 2023	Over-the-Month		Over-the-Year	
				Change Level	Change Percent	Change Level	Change Percent
Florida	9,887,600	9,893,100	9,661,400	-5,500	-0.1	226,200	2.3
Cape Coral-Fort Myers MSA	308,800	308,700	302,100	100	*	6,700	2.2
Crestview-Fort Walton Beach-Destin MSA	133,000	132,800	129,000	200	0.2	4,000	3.1
Deltona-Daytona Beach-Ormond Beach MSA	225,800	226,000	221,700	-200	-0.1	4,100	1.8
Gainesville MSA	156,100	155,900	154,200	200	0.1	1,900	1.2
Homosassa Springs MSA	35,300	35,600	35,500	-300	-0.8	-200	-0.6
Jacksonville MSA	798,600	799,000	784,700	-400	-0.1	13,900	1.8
Lakeland-Winter Haven MSA	275,500	275,300	270,100	200	0.1	5,400	2.0
Miami-Ft. Lauderdale-West Palm Beach MSA	2,942,000	2,948,300	2,875,000	-6,300	-0.2	67,000	2.3
Fort Lauderdale-Pompano Beach-Deerfield Beach MD	927,500	925,200	905,700	2,300	0.2	21,800	2.4
Miami-Miami Beach-Kendall MD	1,318,300	1,330,600	1,286,100	-12,300	-0.9	32,200	2.5
West Palm Beach-Boca Raton-Delray Beach MD	696,800	695,800	683,000	1,000	0.1	13,800	2.0
Naples-Immokalee-Marco Island MSA	173,700	173,900	169,200	-200	-0.1	4,500	2.7
North Port-Sarasota-Bradenton MSA	344,300	344,900	337,900	-600	-0.2	6,400	1.9
Ocala MSA	120,900	120,600	119,200	300	0.2	1,700	1.4
Orlando-Kissimmee-Sanford MSA	1,474,700	1,475,900	1,448,800	-1,200	-0.1	25,900	1.8
Palm Bay-Melbourne-Titusville MSA	256,300	256,200	251,100	100	*	5,200	2.1
Panama City MSA	88,600	88,800	86,800	-200	-0.2	1,800	2.1
Pensacola -Ferry Pass-Brent MSA	203,300	203,300	199,100	0	0.0	4,200	2.1
Port St. Lucie MSA	173,800	174,500	170,500	-700	-0.4	3,300	1.9
Punta Gorda MSA	55,900	56,100	55,400	-200	-0.4	500	0.9
Sebastian-Vero Beach MSA	58,900	58,700	58,300	200	0.3	600	1.0
Sebring MSA	28,300	28,400	27,900	-100	-0.4	400	1.4
Tallahassee MSA	200,000	199,800	195,300	200	0.1	4,700	2.4
Tampa - St. Petersburg - Clearwater MSA	1,546,100	1,548,000	1,518,400	-1,900	-0.1	27,700	1.8
The Villages MSA	40,400	40,400	39,100	0	0.0	1,300	3.3

Released: March 22, 2024

\* - less than 0.1 percent

Source: U.S. Department of Labor, Bureau of Labor Statistics, Current Employment Statistics Program.  
Prepared by: Florida Department of Commerce, Bureau of Workforce Statistics and Economic Research.