

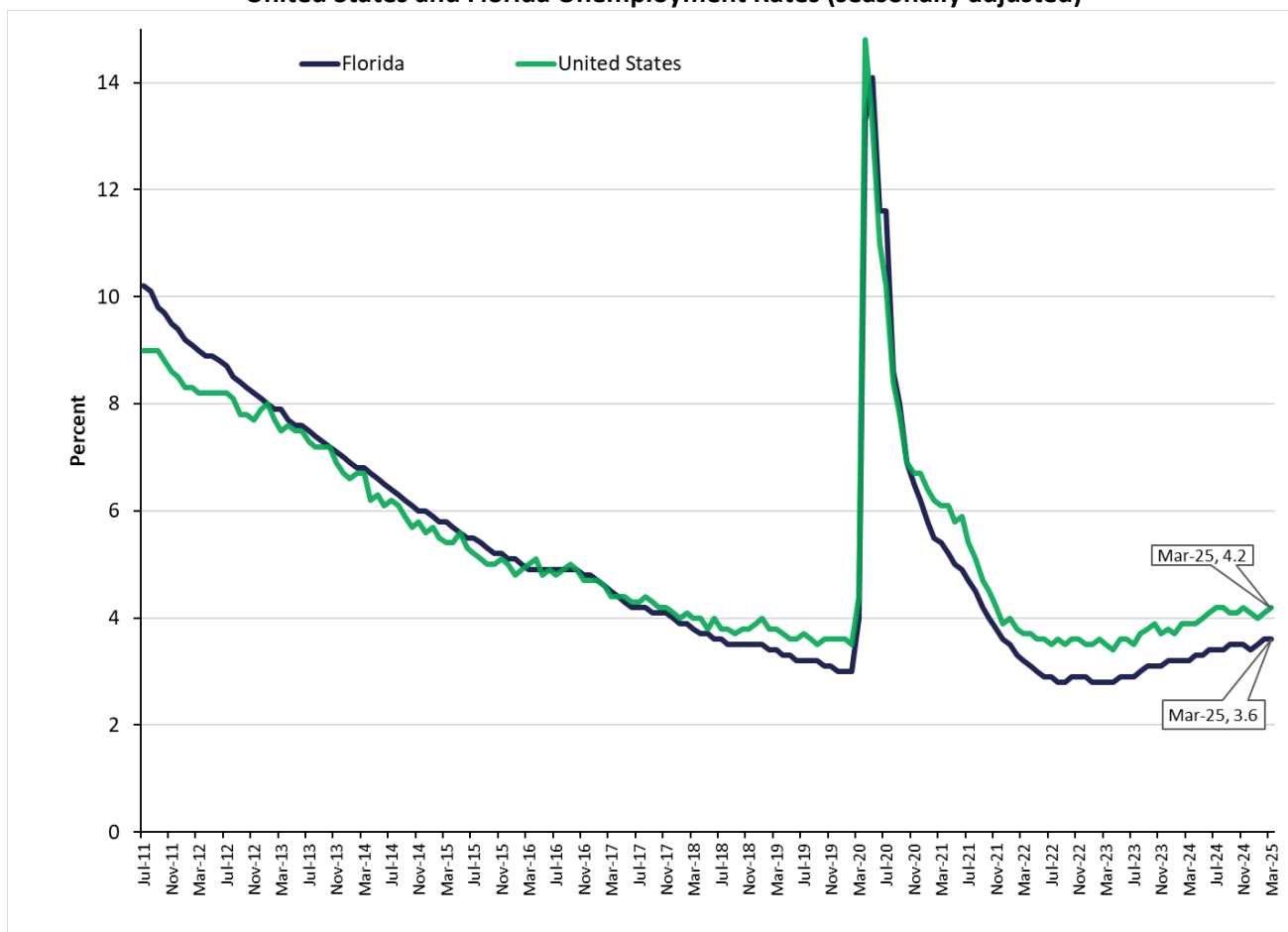
CONTACT: Bureau of Workforce Statistics
and Economic Research
(850) 245-7205

Florida's March Figures Released

Florida's seasonally adjusted unemployment rate was 3.6 percent in March 2025, unchanged from the February 2025 rate, and up 0.4 percentage point from a year ago. There were 403,000 jobless Floridians out of a labor force of 11,198,000. The U.S. seasonally adjusted unemployment rate was 4.2 percent in March.

Florida's seasonally adjusted total nonagricultural employment was 10,050,000 in March 2025, an increase of 18,100 jobs (+0.2 percent) over the month. The state gained 135,000 jobs over the year, an increase of 1.4 percent. Nationally, the number of jobs rose 1.2 percent over the year.

United States and Florida Unemployment Rates (seasonally adjusted)



Source: U.S. Department of Labor, Bureau of Labor Statistics, Local Area Unemployment Statistics Program, in cooperation with the Florida Department of Commerce, Bureau of Workforce Statistics and Economic Research.

Florida's Nonagricultural Employment by Industry (Seasonally Adjusted)

- All ten major industries experienced positive over-the-year job growth in March.
- The industries gaining jobs over the year included education and health services (+42,000 jobs, +2.8 percent); trade, transportation, and utilities (+24,600 jobs, +1.2 percent); total government (+21,400 jobs, +1.9 percent); construction (+11,400 jobs, +1.8 percent); other services (+10,800 jobs, +2.9 percent); professional and business services (+10,500 jobs, +0.6 percent); financial activities (+6,200 jobs, +0.9 percent); manufacturing (+5,700 jobs, +1.3 percent); leisure and hospitality (+1,400 jobs, +0.1 percent); and information (+1,000 jobs, +0.6 percent).

Local Area Unemployment Statistics (Not Seasonally Adjusted)

- In March 2025, Monroe County had the state's lowest unemployment rate (2.4 percent), followed by Miami-Dade County (2.8 percent), and Wakulla County at (3.0 percent).
- Taylor County had the highest unemployment rate (6.1 percent) in Florida in March 2025, followed by Sumter County (5.8 percent), and Hamilton County (5.3 percent).

Area Nonagricultural Employment (Not Seasonally Adjusted)

- In March 2025, 21 of all 25 metro areas in Florida had over-the-year job gains. The areas with the largest gains were the Orlando-Kissimmee-Sanford MSA (+30,100 jobs, +2.0 percent), followed by the Miami-Miami Beach-Kendall MD (+21,200 jobs, +1.6 percent), and the Tampa MD (+14,600 jobs, +1.4 percent).
- Four metro areas in Florida lost jobs over the year in March 2025. The areas with the largest losses were the Cape Coral-Fort Myers MSA (-2,200 jobs, -0.7 percent), followed by the Naples-Marco Island MSA (-1,500 jobs, -0.8 percent), the Sebastian-Vero Beach MSA (-400 jobs, -0.7 percent), and the Punta Gorda MSA (-200 jobs, -0.3 percent).

The unemployment and job growth rates are estimates, which are primarily based on surveys created and mandated by the U.S. Bureau of Labor Statistics in cooperation with the Florida Department of Commerce.

The unemployment rate is derived from Florida household surveys conducted by the U.S. Census Bureau under contract with the U.S. Bureau of Labor Statistics. The job growth rate is derived from Florida employer surveys conducted by the U.S. Bureau of Labor Statistics.

Both estimates are revised on a monthly basis. In addition, these estimates are benchmarked (revised) annually based on actual counts from Florida's Reemployment Assistance tax records and other data.

Procedures mandated by the U.S. Bureau of Labor Statistics may result in more variable month-to-month changes. For further information, go to: <https://www.bls.gov/sae/>

The mission of the Florida Department of Commerce is to promote economic prosperity for all Floridians and businesses through successful workforce, community, and economic development strategies. Please visit www.floridajobs.org for more information.

The next Florida Employment and Unemployment release will be May 16, 2025, at 10:00 A.M.

LABOR FORCE STATUS OF THE CIVILIAN NONINSTITUTIONAL POPULATION
RELEASE DATE: APRIL 18, 2025

SEASONALLY ADJUSTED

	Current Month March 2025	Month Ago February 2025	Year Ago March 2024	Over-the-Month Change		Over-the-Year Change	
				Level	Percent	Level	Percent
STATE OF FLORIDA							
Civilian Noninstitutional							
Population 16+	19,295,000	19,274,000	18,965,000	21,000	0.1	330,000	1.7
Civilian Labor Force	11,198,000	11,197,000	11,136,000	1,000	*	62,000	0.6
Employment	10,795,000	10,799,000	10,777,000	-4,000	*	18,000	0.2
Unemployment	403,000	398,000	359,000	5,000	1.3	44,000	12.3
Unemployment Rate (%)	3.6	3.6	3.2	0.0	--	0.4	--

UNITED STATES

Civilian Noninstitutional Population 16+	273,023,000	272,847,000	267,884,000	176,000	0.1	5,139,000	1.9
Civilian Labor Force	170,591,000	170,359,000	167,922,000	232,000	0.1	2,669,000	1.6
Employment	163,508,000	163,307,000	161,425,000	201,000	0.1	2,083,000	1.3
Unemployment	7,083,000	7,052,000	6,497,000	31,000	0.4	586,000	9.0
Unemployment Rate (%)	4.2	4.1	3.9	0.1	--	0.3	--

NOT SEASONALLY ADJUSTED

	Current Month March 2025	Month Ago February 2025	Year Ago March 2024	Over-the-Month Change		Over-the-Year Change	
				Level	Percent	Level	Percent
STATE OF FLORIDA							
Civilian Noninstitutional							
Population 16+	19,295,000	19,274,000	18,965,000	21,000	0.1	330,000	1.7
Civilian Labor Force	11,171,000	11,178,000	11,139,000	-7,000	-0.1	32,000	0.3
Employment	10,780,000	10,763,000	10,793,000	17,000	0.2	-13,000	-0.1
Unemployment	392,000	415,000	346,000	-23,000	-5.5	46,000	13.3
Unemployment Rate (%)	3.5	3.7	3.1	-0.2	--	0.4	--

UNITED STATES

Civilian Noninstitutional Population 16+	273,023,000	272,847,000	267,884,000	176,000	0.1	5,139,000	1.9
Civilian Labor Force	170,653,000	170,116,000	167,960,000	537,000	0.3	2,693,000	1.6
Employment	163,412,000	162,544,000	161,356,000	868,000	0.5	2,056,000	1.3
Unemployment	7,242,000	7,572,000	6,604,000	-330,000	-4.4	638,000	9.7
Unemployment Rate (%)	4.2	4.5	3.9	-0.3	--	0.3	--

* = less than 0.1 percent

Note: All estimates except unemployment rates are rounded to the nearest thousand. Items may not add to totals or compute to displayed percentages due to rounding. All data are subject to revision.

Source: U.S. Department of Labor, Bureau of Labor Statistics, Local Area Unemployment Statistics Program, in cooperation with the Florida Department of Commerce, Bureau of Workforce Statistics and Economic Research.

Nonagricultural Employment in Florida Seasonally Adjusted

	March ^P 2025	February ^r 2025	March 2024	Over-the-Month Change		Over-the-Year Change	
				Level	Percent	Level	Percent
Total Nonagricultural Employment	10,050,000	10,031,900	9,915,000	18,100	0.2	135,000	1.4
Total Private	8,878,400	8,862,300	8,764,800	16,100	0.2	113,600	1.3
Goods Producing	1,097,300	1,096,800	1,080,200	500	*	17,100	1.6
Mining, Logging, and Construction	662,700	664,100	651,300	-1,400	-0.2	11,400	1.8
Construction	657,000	658,400	645,600	-1,400	-0.2	11,400	1.8
Manufacturing	434,600	432,700	428,900	1,900	0.4	5,700	1.3
Durable Goods	299,700	298,200	295,300	1,500	0.5	4,400	1.5
Nondurable Goods	134,900	134,500	133,600	400	0.3	1,300	1.0
Service Producing	8,952,700	8,935,100	8,834,800	17,600	0.2	117,900	1.3
Private Service Providing	7,781,100	7,765,500	7,684,600	15,600	0.2	96,500	1.3
Trade, Transportation, and Utilities	2,014,800	2,009,000	1,990,200	5,800	0.3	24,600	1.2
Wholesale Trade	404,700	402,700	395,700	2,000	0.5	9,000	2.3
Retail Trade	1,164,900	1,162,200	1,158,300	2,700	0.2	6,600	0.6
Transportation, Warehousing, and Utilities	445,200	444,100	436,200	1,100	0.2	9,000	2.1
Information	160,200	159,700	159,200	500	0.3	1,000	0.6
Financial Activities	692,200	690,800	686,000	1,400	0.2	6,200	0.9
Finance and Insurance	468,000	467,800	465,300	200	*	2,700	0.6
Real Estate, Rental, and Leasing	224,200	223,000	220,700	1,200	0.5	3,500	1.6
Professional and Business Services	1,626,300	1,625,400	1,615,800	900	0.1	10,500	0.6
Professional and Technical Services	762,600	760,600	752,300	2,000	0.3	10,300	1.4
Management of Companies and Enterprises	139,800	139,700	136,700	100	0.1	3,100	2.3
Administrative and Waste Services	723,900	725,100	726,800	-1,200	-0.2	-2,900	-0.4
Education and Health Services	1,566,400	1,560,800	1,524,400	5,600	0.4	42,000	2.8
Educational Services	215,300	214,500	211,000	800	0.4	4,300	2.0
Health Care and Social Assistance	1,351,100	1,346,300	1,313,400	4,800	0.4	37,700	2.9
Leisure and Hospitality	1,332,400	1,333,300	1,331,000	-900	-0.1	1,400	0.1
Arts, Entertainment, and Recreation	273,000	271,800	267,100	1,200	0.4	5,900	2.2
Accommodation and Food Services	1,059,400	1,061,500	1,063,900	-2,100	-0.2	-4,500	-0.4
Other Services	388,800	386,500	378,000	2,300	0.6	10,800	2.9

Source: U.S. Department of Labor, Bureau of Labor Statistics, Current Employment Statistics Program.
Prepared by: Florida Department of Commerce, Bureau of Workforce Statistics and Economic Research.

Nonagricultural Employment in Florida **Seasonally Adjusted**

	March ^p 2025	February ^r 2025	March 2024	Over-the-Month Change		Over-the-Year Change	
				Level	Percent	Level	Percent
Total Government	1,171,600	1,169,600	1,150,200	2,000	0.2	21,400	1.9
Federal Government	163,500	163,300	160,400	200	0.1	3,100	1.9
State Government	258,200	256,600	251,700	1,600	0.6	6,500	2.6
Local Government	749,900	749,700	738,100	200	*	11,800	1.6

Released: April 18, 2025

p = preliminary, r = revised

* - less than 0.1 percent

Note: Sum of detail may not equal totals due to rounding or the exclusion of certain industries from publication. All data are subject to revision.

**NONAGRICULTURAL EMPLOYMENT IN FLORIDA
STATEWIDE (Not Seasonally Adjusted)**

Released April 18, 2025

Series	Industry Title	March 2025	February 2025	March 2024	Change from		
					Feb 2025 to Mar 2025 Level	Mar 2024 to Mar 2025 Level	Percent
00000000	Total Nonfarm	10,079,700	10,062,900	9,947,100	16,800	132,600	1.3%
05000000	Total Private	8,887,300	8,872,400	8,777,200	14,900	110,100	1.3%
06000000	Goods Producing	1,093,500	1,095,100	1,079,600	-1,600	13,900	1.3%
07000000	Service-Providing	8,986,200	8,967,800	8,867,500	18,400	118,700	1.3%
08000000	Private Service Providing	7,793,800	7,777,300	7,697,600	16,500	96,200	1.2%
10000000	Mining and Logging	5,700	5,600	5,700	100	0	0.0%
10212000	Mining (except Oil and Gas)	3,400	3,400	3,400	0	0	0.0%
15000000	Mining, Logging and Construction	659,100	663,600	650,900	-4,500	8,200	1.3%
20000000	Construction	653,400	658,000	645,200	-4,600	8,200	1.3%
20236000	Construction of Buildings	134,300	134,200	130,400	100	3,900	3.0%
20237000	Heavy and Civil Engineering Construction	86,500	85,600	83,000	900	3,500	4.2%
20238000	Specialty Trade Contractors	432,600	438,200	431,800	-5,600	800	0.2%
20238200	Building Equipment Contractors	188,800	191,400	189,300	-2,600	-500	-0.3%
30000000	Manufacturing	434,400	431,500	428,700	2,900	5,700	1.3%
31000000	Durable Goods	299,900	298,200	295,100	1,700	4,800	1.6%
31332000	Fabricated Metal Product Manufacturing	46,500	46,500	46,200	0	300	0.6%
31334000	Computer and Electronic Product Manufacturing	48,500	48,100	48,200	400	300	0.6%
31334200	Communications Equipment Manufacturing	5,300	5,300	5,400	0	-100	-1.9%
31336000	Transportation Equipment Manufacturing	57,900	57,900	58,000	0	-100	-0.2%
31336400	Aerospace Product and Parts Manufacturing	34,000	34,000	33,400	0	600	1.8%
31339000	Miscellaneous Manufacturing	38,000	37,800	36,900	200	1,100	3.0%
32000000	Non-Durable Goods	134,500	133,300	133,600	1,200	900	0.7%
32311000	Food Manufacturing	39,600	39,600	39,300	0	300	0.8%
32312000	Beverage and Tobacco Product Manufacturing	13,600	13,600	14,200	0	-600	-4.2%
32322000	Paper Manufacturing	7,200	7,300	7,500	-100	-300	-4.0%
32323000	Printing and Related Support Activities	15,500	15,500	16,100	0	-600	-3.7%
32325000	Chemical Manufacturing	29,800	29,300	28,400	500	1,400	4.9%
40000000	Trade, Transportation, and Utilities	2,010,800	2,012,900	1,981,500	-2,100	29,300	1.5%
41000000	Wholesale Trade	404,800	402,300	395,900	2,500	8,900	2.2%
41423000	Merchant Wholesalers, Durable Goods	218,400	219,100	215,900	-700	2,500	1.2%
41423400	Professional and Commercial Equipment and Supplies Merchant Wholesalers	58,900	58,900	58,600	0	300	0.5%
41423600	Household Appliances and Electrical and Electronic Goods Merchant Wholesalers	25,000	25,000	24,900	0	100	0.4%
41423800	Machinery, Equipment, and Supplies Merchant Wholesalers	40,300	39,900	39,000	400	1,300	3.3%
41424000	Merchant Wholesalers, Nondurable Goods	161,800	158,600	155,400	3,200	6,400	4.1%
41424400	Grocery and Related Product Merchant Wholesalers	66,300	64,300	63,800	2,000	2,500	3.9%
41425000	Wholesale Trade Agents and Brokers	24,600	24,600	24,600	0	0	0.0%
42000000	Retail Trade	1,165,400	1,165,000	1,153,700	400	11,700	1.0%
42441000	Motor Vehicle and Parts Dealers	171,400	168,200	162,800	3,200	8,600	5.3%
42441100	Automobile Dealers	109,000	107,600	102,400	1,400	6,600	6.4%

Source: U.S. Department of Labor, Bureau of Labor Statistics, Current Employment Statistics Program.

Prepared by: Florida Department of Commerce, Bureau of Workforce Statistics and Economic Research.

**NONAGRICULTURAL EMPLOYMENT IN FLORIDA
STATEWIDE (Not Seasonally Adjusted)**

Released April 18, 2025

Series	Industry Title	Change from					
		March 2025	February 2025	March 2024	Feb 2025 to Mar 2025 Level Percent	Mar 2024 to Mar 2025 Level Percent	
42444000	Building Material and Garden Equipment and Supplies Dealers	97,900	97,500	99,900	400	0.4%	-2,000 -2.0%
42445000	Food and Beverage Retailers	271,400	272,400	266,000	-1,000	-0.4%	5,400 2.0%
42449000	Furniture, Home Furnishings, Electronics, and Appliance Retailers	64,700	65,100	66,800	-400	-0.6%	-2,100 -3.1%
42449100	Furniture and Home Furnishings Retailers	34,300	34,500	35,500	-200	-0.6%	-1,200 -3.4%
42449200	Electronics and Appliance Retailers	30,400	30,600	31,300	-200	-0.7%	-900 -2.9%
42455000	General Merchandise Retailers	226,700	227,400	223,600	-700	-0.3%	3,100 1.4%
42455100	Department Stores	68,900	69,700	67,500	-800	-1.1%	1,400 2.1%
42455200	Warehouse Clubs, Supercenters, and Other General Merchandise Retailers	157,800	157,700	156,100	100	0.1%	1,700 1.1%
42456000	Health and Personal Care Retailers	86,200	86,300	88,500	-100	-0.1%	-2,300 -2.6%
42457000	Gasoline Stations and Fuel Dealers	49,400	49,500	49,600	-100	-0.2%	-200 -0.4%
42458000	Clothing, Clothing Accessories, Shoe, and Jewelry Retailers	95,400	96,800	95,200	-1,400	-1.4%	200 0.2%
42459000	Sporting Goods, Hobby, Musical Instrument, Book, and Miscellaneous Retailers	102,300	101,800	101,300	500	0.5%	1,000 1.0%
43000000	Transportation, Warehousing, and Utilities	440,600	445,600	431,900	-5,000	-1.1%	8,700 2.0%
43220000	Utilities	26,600	26,400	26,300	200	0.8%	300 1.1%
43400089	Transportation and Warehousing	414,000	419,200	405,600	-5,200	-1.2%	8,400 2.1%
43481000	Air Transportation	59,000	59,000	59,500	0	0.0%	-500 -0.8%
43483000	Water Transportation	19,800	19,700	19,600	100	0.5%	200 1.0%
43484000	Truck Transportation	63,700	63,400	66,500	300	0.5%	-2,800 -4.2%
43488000	Support Activities for Transportation	74,400	74,100	73,900	300	0.4%	500 0.7%
43492000	Couriers and Messengers	67,000	70,100	61,800	-3,100	-4.4%	5,200 8.4%
43493000	Warehousing and Storage	101,900	103,800	98,100	-1,900	-1.8%	3,800 3.9%
50000000	Information	160,000	160,200	159,200	-200	-0.1%	800 0.5%
50513000	Publishing Industries	44,000	43,900	43,600	100	0.2%	400 0.9%
50516000	Broadcasting and Content Providers	17,000	16,900	16,800	100	0.6%	200 1.2%
50517000	Telecommunications	46,000	46,100	46,700	-100	-0.2%	-700 -1.5%
50517111	Wired Telecommunications Carriers	34,200	34,400	35,100	-200	-0.6%	-900 -2.6%
50518000	Computing Infrastructure Providers, Data Processing, Web Hosting, and Related	30,100	30,000	29,700	100	0.3%	400 1.3%
55000000	Financial Activities	688,900	689,000	684,400	-100	*	4,500 0.7%
55520000	Finance and Insurance	466,500	467,000	463,800	-500	-0.1%	2,700 0.6%
55522000	Credit Intermediation and Related Activities including Monetary Authorities - Cent	177,800	177,500	179,800	300	0.2%	-2,000 -1.1%
55522100	Depository Credit Intermediation including Monetary Authorities - Central Bank	121,400	121,500	122,900	-100	-0.1%	-1,500 -1.2%
55524000	Insurance Carriers and Related Activities	221,400	222,200	218,900	-800	-0.4%	2,500 1.1%
55524100	Insurance Carriers	100,800	100,900	100,800	-100	-0.1%	0 0.0%
55524200	Agencies, Brokerages, and Other Insurance Related Activities	120,600	121,300	118,100	-700	-0.6%	2,500 2.1%
55530000	Real Estate and Rental and Leasing	222,400	222,000	220,600	400	0.2%	1,800 0.8%
55531000	Real Estate	169,800	169,200	168,500	600	0.4%	1,300 0.8%
60000000	Professional and Business Services	1,618,500	1,620,800	1,612,700	-2,300	-0.1%	5,800 0.4%
60540000	Professional, Scientific, and Technical Services	761,900	762,300	751,600	-400	-0.1%	10,300 1.4%
60541100	Legal Services	111,300	110,800	112,100	500	0.5%	-800 -0.7%

Source: U.S. Department of Labor, Bureau of Labor Statistics, Current Employment Statistics Program.

Prepared by: Florida Department of Commerce, Bureau of Workforce Statistics and Economic Research.

**NONAGRICULTURAL EMPLOYMENT IN FLORIDA
STATEWIDE (Not Seasonally Adjusted)**

Released April 18, 2025

Series	Industry Title	March 2025	February 2025	March 2024	Change from			
					Feb 2025 to Mar 2025 Level	Percent	Mar 2024 to Mar 2025 Level	Percent
60541200	Accounting, Tax Preparation, Bookkeeping, and Payroll Services	96,200	95,300	93,500	900	0.9%	2,700	2.9%
60541300	Architectural, Engineering, and Related Services	115,000	112,600	108,700	2,400	2.1%	6,300	5.8%
60541500	Computer Systems Design and Related Services	134,400	137,400	138,000	-3,000	-2.2%	-3,600	-2.6%
60541600	Management, Scientific, and Technical Consulting Services	160,300	162,100	160,900	-1,800	-1.1%	-600	-0.4%
60550000	Management of Companies and Enterprises	139,800	139,600	136,500	200	0.1%	3,300	2.4%
60560000	Administrative and Support and Waste Management and Remediation Services	716,800	718,900	724,600	-2,100	-0.3%	-7,800	-1.1%
60561000	Administrative and Support Services	684,100	686,400	692,500	-2,300	-0.3%	-8,400	-1.2%
60561300	Employment Services	222,800	224,800	232,000	-2,000	-0.9%	-9,200	-4.0%
60561400	Business Support Services	68,600	66,900	73,700	1,700	2.5%	-5,100	-6.9%
60561500	Travel Arrangement and Reservation Services	27,800	27,700	28,300	100	0.4%	-500	-1.8%
60561600	Investigation and Security Services	76,500	76,600	78,800	-100	-0.1%	-2,300	-2.9%
60561700	Services to Buildings and Dwellings	200,900	202,600	194,700	-1,700	-0.8%	6,200	3.2%
60562000	Waste Management and Remediation Services	32,700	32,500	32,100	200	0.6%	600	1.9%
65000000	Private Education and Health Services	1,572,600	1,565,800	1,526,500	6,800	0.4%	46,100	3.0%
65610000	Private Educational Services	220,300	221,600	215,800	-1,300	-0.6%	4,500	2.1%
65611100	Private Elementary and Secondary Schools	91,200	91,300	85,800	-100	-0.1%	5,400	6.3%
65611300	Private Colleges, Universities, and Professional Schools	68,700	69,200	67,700	-500	-0.7%	1,000	1.5%
65620000	Health Care and Social Assistance	1,352,300	1,344,200	1,310,700	8,100	0.6%	41,600	3.2%
65621000	Ambulatory Health Care Services	625,000	622,000	604,500	3,000	0.5%	20,500	3.4%
65621100	Offices of Physicians	263,900	264,700	256,400	-800	-0.3%	7,500	2.9%
65621600	Home Health Care Services	90,000	88,000	83,600	2,000	2.3%	6,400	7.7%
65622000	Hospitals	371,600	367,600	358,200	4,000	1.1%	13,400	3.7%
65623000	Nursing and Residential Care Facilities	199,300	198,400	191,100	900	0.5%	8,200	4.3%
65623100	Nursing Care Facilities (Skilled Nursing Facilities)	93,800	93,600	88,500	200	0.2%	5,300	6.0%
65623300	Continuing Care Retirement Communities and Assisted Living Facilities for the Elderly	71,700	71,300	69,800	400	0.6%	1,900	2.7%
65624000	Social Assistance	156,400	156,200	156,900	200	0.1%	-500	-0.3%
70000000	Leisure and Hospitality	1,353,900	1,341,900	1,354,100	12,000	0.9%	-200	*
70710000	Arts, Entertainment, and Recreation	280,300	275,500	273,400	4,800	1.7%	6,900	2.5%
70713000	Amusement, Gambling, and Recreation Industries	224,000	221,000	214,300	3,000	1.4%	9,700	4.5%
70713100	Amusement Parks and Arcades	89,400	88,200	84,900	1,200	1.4%	4,500	5.3%
70720000	Accommodation and Food Services	1,073,600	1,066,400	1,080,700	7,200	0.7%	-7,100	-0.7%
70721000	Accommodation	206,600	206,100	197,600	500	0.2%	9,000	4.6%
70722000	Food Services and Drinking Places	867,000	860,300	883,100	6,700	0.8%	-16,100	-1.8%
80000000	Other Services	389,100	386,700	379,200	2,400	0.6%	9,900	2.6%
80811000	Repair and Maintenance	99,100	100,200	97,400	-1,100	-1.1%	1,700	1.7%
80811100	Automotive Repair and Maintenance	64,400	65,500	64,100	-1,100	-1.7%	300	0.5%
80812000	Personal and Laundry Services	113,300	110,900	110,500	2,400	2.2%	2,800	2.5%
80813000	Religious, Grantmaking, Civic, Professional, and Similar Organizations	176,700	175,600	171,300	1,100	0.6%	5,400	3.2%
90000000	Government	1,192,400	1,190,500	1,169,900	1,900	0.2%	22,500	1.9%

Source: U.S. Department of Labor, Bureau of Labor Statistics, Current Employment Statistics Program.

Prepared by: Florida Department of Commerce, Bureau of Workforce Statistics and Economic Research.

**NONAGRICULTURAL EMPLOYMENT IN FLORIDA
STATEWIDE (Not Seasonally Adjusted)**

Released April 18, 2025

Series	Industry Title	March 2025	February 2025	March 2024	Change from			
					Feb 2025 to Mar 2025 Level	Mar 2025 Percent	Mar 2024 to Mar 2025 Level	Mar 2024 to Mar 2025 Percent
90910000	Federal Government	163,000	163,100	159,900	-100	-0.1%	3,100	1.9%
90920000	State Government	265,100	263,400	257,300	1,700	0.6%	7,800	3.0%
90921611	State Government Educational Services	152,300	151,000	146,700	1,300	0.9%	5,600	3.8%
90922000	State Government Excluding Education	112,800	112,400	110,600	400	0.4%	2,200	2.0%
90930000	Local Government	764,300	764,000	752,700	300	*	11,600	1.5%
90931611	Local Government Educational Services	353,400	353,100	354,100	300	0.1%	-700	-0.2%
90932000	Local Government excluding Educational Services	410,900	410,900	398,600	0	0.0%	12,300	3.1%

* - less than 0.1 percent

Note: Employment estimates have been rounded to the nearest hundred. Sum of detail may not equal totals due to rounding or the exclusion of certain industries from publication. All data are subject to revision.

STATE OF FLORIDA
LOCAL AREA UNEMPLOYMENT STATISTICS BY COUNTY
(NOT SEASONALLY ADJUSTED)

COUNTY	MARCH 2025				FEBRUARY 2025				MARCH 2024			
	LABOR FORCE	EMPLOY- MENT	UNEMPLOYMENT LEVEL	RATE	LABOR FORCE	EMPLOY- MENT	UNEMPLOYMENT LEVEL	RATE	LABOR FORCE	EMPLOY- MENT	UNEMPLOYMENT LEVEL	RATE
Alachua County	145,474	139,485	5,989	4.1%	144,747	138,824	5,923	4.1%	141,393	136,141	5,252	3.7%
Baker County	12,169	11,727	442	3.6%	12,148	11,681	467	3.8%	12,068	11,704	364	3.0%
Bay County	92,211	89,038	3,173	3.4%	91,782	88,248	3,534	3.9%	92,202	89,387	2,815	3.1%
Bradford County	10,347	9,950	397	3.8%	10,346	9,923	423	4.1%	10,359	9,988	371	3.6%
Brevard County	306,868	295,517	11,351	3.7%	306,488	294,337	12,151	4.0%	303,827	294,118	9,709	3.2%
Broward County	1,086,217	1,050,855	35,362	3.3%	1,085,201	1,047,488	37,713	3.5%	1,082,478	1,050,768	31,710	2.9%
Calhoun County	5,158	4,964	194	3.8%	5,133	4,922	211	4.1%	5,093	4,920	173	3.4%
Charlotte County	77,928	74,624	3,304	4.2%	77,963	74,266	3,697	4.7%	78,131	75,334	2,797	3.6%
Citrus County	53,884	51,147	2,737	5.1%	53,859	50,784	3,075	5.7%	53,792	51,357	2,435	4.5%
Clay County	114,905	110,786	4,119	3.6%	114,790	110,387	4,403	3.8%	114,115	110,459	3,656	3.2%
Collier County	186,783	180,296	6,487	3.5%	186,574	179,466	7,108	3.8%	188,753	183,268	5,485	2.9%
Columbia County	28,233	27,053	1,180	4.2%	28,240	26,989	1,251	4.4%	27,859	26,817	1,042	3.7%
DeSoto County	12,743	12,188	555	4.4%	12,768	12,153	615	4.8%	12,798	12,328	470	3.7%
Dixie County	5,953	5,697	256	4.3%	5,937	5,658	279	4.7%	5,946	5,724	222	3.7%
Duval County	524,508	505,554	18,954	3.6%	523,712	503,640	20,072	3.8%	521,292	504,038	17,254	3.3%
Escambia County	149,451	143,730	5,721	3.8%	148,799	142,740	6,059	4.1%	149,032	143,895	5,137	3.4%
Flagler County	55,579	53,304	2,275	4.1%	55,558	53,023	2,535	4.6%	55,519	53,500	2,019	3.6%
Franklin County	4,421	4,252	169	3.8%	4,394	4,194	200	4.6%	4,567	4,409	158	3.5%
Gadsden County	17,773	17,017	756	4.3%	17,743	16,942	801	4.5%	17,391	16,737	654	3.8%
Gilchrist County	8,277	7,985	292	3.5%	8,256	7,941	315	3.8%	8,058	7,788	270	3.4%
Glades County	4,003	3,815	188	4.7%	3,964	3,753	211	5.3%	4,003	3,828	175	4.4%
Gulf County	6,806	6,562	244	3.6%	6,786	6,525	261	3.8%	6,888	6,677	211	3.1%
Hamilton County	4,221	3,999	222	5.3%	4,156	3,925	231	5.6%	4,133	3,956	177	4.3%
Hardee County	9,986	9,542	444	4.4%	9,832	9,377	455	4.6%	10,334	9,926	408	3.9%
Hendry County	21,814	21,027	787	3.6%	21,746	20,922	824	3.8%	21,502	20,790	712	3.3%
Hernando County	91,181	87,431	3,750	4.1%	91,247	87,169	4,078	4.5%	90,551	87,197	3,354	3.7%
Highlands County	36,700	34,901	1,799	4.9%	36,828	34,804	2,024	5.5%	36,813	35,252	1,561	4.2%
Hillsborough County	812,871	784,291	28,580	3.5%	812,238	782,206	30,032	3.7%	807,504	781,734	25,770	3.2%
Holmes County	7,901	7,598	303	3.8%	7,830	7,509	321	4.1%	7,905	7,648	257	3.3%
Indian River County	67,699	64,948	2,751	4.1%	67,812	64,766	3,046	4.5%	68,340	65,933	2,407	3.5%
Jackson County	18,263	17,547	716	3.9%	18,228	17,459	769	4.2%	18,358	17,668	690	3.8%
Jefferson County	7,149	6,917	232	3.2%	7,149	6,890	259	3.6%	7,046	6,820	226	3.2%
Lafayette County	2,650	2,535	115	4.3%	2,627	2,508	119	4.5%	2,627	2,524	103	3.9%
Lake County	199,087	191,916	7,171	3.6%	198,883	191,108	7,775	3.9%	196,445	190,126	6,319	3.2%
Lee County	376,969	362,949	14,020	3.7%	377,055	361,935	15,120	4.0%	380,796	368,617	12,179	3.2%
Leon County	168,281	161,943	6,338	3.8%	167,656	161,357	6,299	3.8%	165,404	159,781	5,623	3.4%
Levy County	19,323	18,534	789	4.1%	19,330	18,481	849	4.4%	18,825	18,122	703	3.7%
Liberty County	2,519	2,426	93	3.7%	2,494	2,390	104	4.2%	2,503	2,414	89	3.6%
Madison County	6,735	6,445	290	4.3%	6,817	6,485	332	4.9%	6,867	6,595	272	4.0%

Source: U.S. Department of Labor, Bureau of Labor Statistics, Local Area Unemployment Statistics Program, in cooperation with the Florida Department of Commerce, Bureau of Workforce Statistics and Economic Research.

STATE OF FLORIDA
LOCAL AREA UNEMPLOYMENT STATISTICS BY COUNTY
(NOT SEASONALLY ADJUSTED)

COUNTY	MARCH 2025				FEBRUARY 2025				MARCH 2024			
	LABOR FORCE	EMPLOY- MENT	UNEMPLOYMENT LEVEL	RATE	LABOR FORCE	EMPLOY- MENT	UNEMPLOYMENT LEVEL	RATE	LABOR FORCE	EMPLOY- MENT	UNEMPLOYMENT LEVEL	RATE
Manatee County	199,326	192,040	7,286	3.7%	199,152	191,144	8,008	4.0%	198,861	192,516	6,345	3.2%
Marion County	159,614	152,802	6,812	4.3%	159,853	152,431	7,422	4.6%	158,078	152,005	6,073	3.8%
Martin County	72,432	69,826	2,606	3.6%	72,260	69,395	2,865	4.0%	71,839	69,527	2,312	3.2%
Miami-Dade County	1,424,102	1,384,422	39,680	2.8%	1,447,718	1,409,542	38,176	2.6%	1,441,379	1,407,569	33,810	2.3%
Monroe County	51,433	50,221	1,212	2.4%	50,947	49,598	1,349	2.6%	50,383	49,337	1,046	2.1%
Nassau County	47,385	45,749	1,636	3.5%	47,355	45,591	1,764	3.7%	47,053	45,610	1,443	3.1%
Okaloosa County	101,854	98,469	3,385	3.3%	101,281	97,599	3,682	3.6%	101,360	98,440	2,920	2.9%
Okeechobee County	16,209	15,561	648	4.0%	16,172	15,451	721	4.5%	15,980	15,434	546	3.4%
Orange County	831,777	803,802	27,975	3.4%	829,806	800,485	29,321	3.5%	821,423	796,446	24,977	3.0%
Osceola County	237,445	228,862	8,583	3.6%	236,839	227,924	8,915	3.8%	234,200	226,664	7,536	3.2%
Palm Beach County	778,376	751,696	26,680	3.4%	776,495	747,873	28,622	3.7%	780,940	757,240	23,700	3.0%
Pasco County	297,985	286,735	11,250	3.8%	297,960	285,813	12,147	4.1%	295,705	285,696	10,009	3.4%
Pinellas County	503,093	486,540	16,553	3.3%	500,999	482,537	18,462	3.7%	504,164	489,628	14,536	2.9%
Polk County	359,287	343,980	15,307	4.3%	358,260	342,122	16,138	4.5%	357,221	343,448	13,773	3.9%
Putnam County	29,566	28,295	1,271	4.3%	29,487	28,132	1,355	4.6%	28,941	27,774	1,167	4.0%
Santa Rosa County	91,221	87,923	3,298	3.6%	90,827	87,312	3,515	3.9%	90,901	88,000	2,901	3.2%
Sarasota County	202,620	195,197	7,423	3.7%	202,506	194,256	8,250	4.1%	201,797	195,417	6,380	3.2%
Seminole County	279,990	271,058	8,932	3.2%	279,488	270,037	9,451	3.4%	276,411	268,653	7,758	2.8%
St. Johns County	156,051	150,516	5,535	3.5%	155,621	149,829	5,792	3.7%	154,967	150,192	4,775	3.1%
St. Lucie County	169,265	162,495	6,770	4.0%	168,811	161,522	7,289	4.3%	167,951	161,888	6,063	3.6%
Sumter County	34,358	32,371	1,987	5.8%	34,761	32,395	2,366	6.8%	34,101	32,333	1,768	5.2%
Suwannee County	17,864	17,126	738	4.1%	17,764	16,982	782	4.4%	17,520	16,884	636	3.6%
Taylor County	5,708	5,357	351	6.1%	5,706	5,337	369	6.5%	5,849	5,512	337	5.8%
Union County	4,297	4,093	204	4.7%	4,282	4,071	211	4.9%	4,142	3,967	175	4.2%
Volusia County	268,083	257,477	10,606	4.0%	267,608	256,174	11,434	4.3%	267,711	258,396	9,315	3.5%
Wakulla County	18,259	17,718	541	3.0%	18,200	17,614	586	3.2%	17,987	17,512	475	2.6%
Walton County	41,185	39,870	1,315	3.2%	40,953	39,519	1,434	3.5%	41,121	39,961	1,160	2.8%
Washington County	9,328	8,947	381	4.1%	9,298	8,875	423	4.5%	9,316	8,975	341	3.7%
Florida (Not Seasonally Adjusted)	11,171,000	10,780,000	392,000	3.5%	11,178,000	10,763,000	415,000	3.7%	11,139,000	10,793,000	346,000	3.1%
Florida (Seasonally Adjusted)	11,198,000	10,795,000	403,000	3.6%	11,197,000	10,799,000	398,000	3.6%	11,136,000	10,777,000	359,000	3.2%
United States (Not Seasonally Adjusted)	170,653,000	163,412,000	7,242,000	4.2%	170,116,000	162,544,000	7,572,000	4.5%	167,960,000	161,356,000	6,604,000	3.9%
United States (Seasonally Adjusted)	170,591,000	163,508,000	7,083,000	4.2%	170,359,000	163,307,000	7,052,000	4.1%	167,922,000	161,425,000	6,497,000	3.9%

Released: Friday, April 18, 2025

NOTE: Items may not add to totals or compute to displayed percentages due to rounding. All data are subject to revision.

Source: U.S. Department of Labor, Bureau of Labor Statistics, Local Area Unemployment Statistics Program, in cooperation with the Florida Department of Commerce, Bureau of Workforce Statistics and Economic Research.

STATE OF FLORIDA
LOCAL AREA UNEMPLOYMENT STATISTICS BY METROPOLITAN STATISTICAL AREA (MSA) AND METROPOLITAN DIVISION (MD)
(NOT SEASONALLY ADJUSTED)

MSA/MD	MARCH 2025				FEBRUARY 2025				MARCH 2024			
	LABOR FORCE	EMPLOY- MENT	UNEMPLOYMENT LEVEL	RATE	LABOR FORCE	EMPLOY- MENT	UNEMPLOYMENT LEVEL	RATE	LABOR FORCE	EMPLOY- MENT	UNEMPLOYMENT LEVEL	RATE
Cape Coral-Fort Myers MSA	376,969	362,949	14,020	3.7%	377,055	361,935	15,120	4.0%	380,796	368,617	12,179	3.2%
Crestview-Fort Walton Beach-Destin MSA	143,039	138,339	4,700	3.3%	142,234	137,118	5,116	3.6%	142,481	138,401	4,080	2.9%
Deltona-Daytona Beach-Ormond Beach MSA	323,662	310,781	12,881	4.0%	323,166	309,197	13,969	4.3%	323,230	311,896	11,334	3.5%
Gainesville MSA	173,074	166,004	7,070	4.1%	172,333	165,246	7,087	4.1%	168,276	162,051	6,225	3.7%
Homosassa Springs MSA	53,884	51,147	2,737	5.1%	53,859	50,784	3,075	5.7%	53,792	51,357	2,435	4.5%
Jacksonville MSA	855,018	824,332	30,686	3.6%	853,626	821,128	32,498	3.8%	849,495	822,003	27,492	3.2%
Lakeland-Winter Haven MSA	359,287	343,980	15,307	4.3%	358,260	342,122	16,138	4.5%	357,221	343,448	13,773	3.9%
Miami-Fort Lauderdale-West Palm Beach MSA	3,288,695	3,186,973	101,722	3.1%	3,309,414	3,204,903	104,511	3.2%	3,304,797	3,215,577	89,220	2.7%
Fort Lauderdale-Pompano Beach-Sunrise Division	1,086,217	1,050,855	35,362	3.3%	1,085,201	1,047,488	37,713	3.5%	1,082,478	1,050,768	31,710	2.9%
Miami-Miami Beach-Kendall MD	1,424,102	1,384,422	39,680	2.8%	1,447,718	1,409,542	38,176	2.6%	1,441,379	1,407,569	33,810	2.3%
West Palm Beach-Boca Raton-Delray Beach MD	778,376	751,696	26,680	3.4%	776,495	747,873	28,622	3.7%	780,940	757,240	23,700	3.0%
Naples-Marco Island MSA	186,783	180,296	6,487	3.5%	186,574	179,466	7,108	3.8%	188,753	183,268	5,485	2.9%
North Port-Bradenton-Sarasota MSA	401,946	387,237	14,709	3.7%	401,658	385,400	16,258	4.0%	400,658	387,933	12,725	3.2%
Ocala MSA	159,614	152,802	6,812	4.3%	159,853	152,431	7,422	4.6%	158,078	152,005	6,073	3.8%
Orlando-Kissimmee-Sanford MSA	1,548,299	1,495,638	52,661	3.4%	1,545,016	1,489,554	55,462	3.6%	1,528,479	1,481,889	46,590	3.0%
Palm Bay-Melbourne-Titusville MSA	306,868	295,517	11,351	3.7%	306,488	294,337	12,151	4.0%	303,827	294,118	9,709	3.2%
Panama City-Panama City Beach MSA	101,539	97,985	3,554	3.5%	101,080	97,123	3,957	3.9%	101,518	98,362	3,156	3.1%
Pensacola-Ferry Pass-Brent MSA	240,672	231,653	9,019	3.7%	239,626	230,052	9,574	4.0%	239,933	231,895	8,038	3.4%
Port St. Lucie MSA	241,697	232,321	9,376	3.9%	241,071	230,917	10,154	4.2%	239,790	231,415	8,375	3.5%
Punta Gorda MSA	77,928	74,624	3,304	4.2%	77,963	74,266	3,697	4.7%	78,131	75,334	2,797	3.6%
Sebastian-Vero Beach MSA	67,699	64,948	2,751	4.1%	67,812	64,766	3,046	4.5%	68,340	65,933	2,407	3.5%
Sebring MSA	36,700	34,901	1,799	4.9%	36,828	34,804	2,024	5.5%	36,813	35,252	1,561	4.2%
Tallahassee MSA	211,462	203,595	7,867	3.7%	210,748	202,803	7,945	3.8%	207,828	200,850	6,978	3.4%
Tampa-St. Petersburg-Clearwater MSA	1,705,130	1,644,997	60,133	3.5%	1,702,444	1,637,725	64,719	3.8%	1,697,924	1,644,255	53,669	3.2%
St. Petersburg-Clearwater-Largo MD	503,093	486,540	16,553	3.3%	500,999	482,537	18,462	3.7%	504,164	489,628	14,536	2.9%
Tampa MD	1,202,037	1,158,457	43,580	3.6%	1,201,445	1,155,188	46,257	3.9%	1,193,760	1,154,627	39,133	3.3%
Wildwood-The Villages MSA	34,358	32,371	1,987	5.8%	34,761	32,395	2,366	6.8%	34,101	32,333	1,768	5.2%
Florida (Not Seasonally Adjusted)	11,171,000	10,780,000	392,000	3.5%	11,178,000	10,763,000	415,000	3.7%	11,139,000	10,793,000	346,000	3.1%
Florida (Seasonally Adjusted)	11,198,000	10,795,000	403,000	3.6%	11,197,000	10,799,000	398,000	3.6%	11,136,000	10,777,000	359,000	3.2%
United States (Not Seasonally Adjusted)	170,653,000	163,412,000	7,242,000	4.2%	170,116,000	162,544,000	7,572,000	4.5%	167,960,000	161,356,000	6,604,000	3.9%
United States (Seasonally Adjusted)	170,591,000	163,508,000	7,083,000	4.2%	170,359,000	163,307,000	7,052,000	4.1%	167,922,000	161,425,000	6,497,000	3.9%

Released: Friday, April 18, 2025

NOTE: Items may not add to totals or compute to displayed percentages due to rounding. All data are subject to revision.

Source: U.S. Department of Labor, Bureau of Labor Statistics, Local Area Unemployment Statistics Program, in cooperation with the Florida Department of Commerce, Bureau of Workforce Statistics and Economic Research.

STATE OF FLORIDA
COUNTIES RANKED BY UNEMPLOYMENT RATE
(NOT SEASONALLY ADJUSTED)
MARCH 2025 (PRELIMINARY)

1	Taylor County	6.1%
2	Sumter County	5.8%
3	Hamilton County	5.3%
4	Citrus County	5.1%
5	Highlands County	4.9%
6	Glades County	4.7%
6	Union County	4.7%
8	DeSoto County	4.4%
8	Hardee County	4.4%
10	Dixie County	4.3%
10	Gadsden County	4.3%
10	Lafayette County	4.3%
10	Madison County	4.3%
10	Marion County	4.3%
10	Polk County	4.3%
10	Putnam County	4.3%
17	Charlotte County	4.2%
17	Columbia County	4.2%
	United States	4.2%
19	Alachua County	4.1%
19	Flagler County	4.1%
19	Hernando County	4.1%
19	Indian River County	4.1%
19	Levy County	4.1%
19	Suwannee County	4.1%
19	Washington County	4.1%
26	Okeechobee County	4.0%
26	St. Lucie County	4.0%
26	Volusia County	4.0%
29	Jackson County	3.9%
30	Bradford County	3.8%
30	Calhoun County	3.8%
30	Escambia County	3.8%
30	Franklin County	3.8%
30	Holmes County	3.8%
30	Leon County	3.8%
30	Pasco County	3.8%
37	Brevard County	3.7%
37	Lee County	3.7%
37	Liberty County	3.7%

STATE OF FLORIDA
COUNTIES RANKED BY UNEMPLOYMENT RATE
(NOT SEASONALLY ADJUSTED)
MARCH 2025 (PRELIMINARY)

37	Manatee County	3.7%
37	Sarasota County	3.7%
42	Baker County	3.6%
42	Clay County	3.6%
42	Duval County	3.6%
42	Gulf County	3.6%
42	Hendry County	3.6%
42	Lake County	3.6%
42	Martin County	3.6%
42	Osceola County	3.6%
42	Santa Rosa County	3.6%
51	Collier County	3.5%
51	Gilchrist County	3.5%
51	Hillsborough County	3.5%
51	Nassau County	3.5%
51	St. Johns County	3.5%
	Florida	3.5%
56	Bay County	3.4%
56	Orange County	3.4%
56	Palm Beach County	3.4%
59	Broward County	3.3%
59	Okaloosa County	3.3%
59	Pinellas County	3.3%
62	Jefferson County	3.2%
62	Seminole County	3.2%
62	Walton County	3.2%
65	Wakulla County	3.0%
66	Miami-Dade County	2.8%
67	Monroe County	2.4%

Source: U.S. Department of Labor, Bureau of Labor Statistics, Local Area Unemployment Statistics Program,
in cooperation with the Florida Department of Commerce, Bureau of Workforce Statistics and Economic Research.
Released: Friday, April 18, 2025

NOTE: All data are subject to revision.

STATE OF FLORIDA
METROPOLITAN STATISTICAL AREAS (MSAs) AND METROPOLITAN DIVISIONS (MDs)
RANKED BY UNEMPLOYMENT RATE
(NOT SEASONALLY ADJUSTED)
MARCH 2025 (PRELIMINARY)

1	Wildwood-The Villages MSA	5.8%
2	Homosassa Springs MSA	5.1%
3	Sebring MSA	4.9%
4	Lakeland-Winter Haven MSA	4.3%
4	Ocala MSA	4.3%
6	Punta Gorda MSA	4.2%
	United States	4.2%
7	Gainesville MSA	4.1%
7	Sebastian-Vero Beach MSA	4.1%
9	Deltona-Daytona Beach-Ormond Beach MSA	4.0%
10	Port St. Lucie MSA	3.9%
11	Cape Coral-Fort Myers MSA	3.7%
11	North Port-Bradenton-Sarasota MSA	3.7%
11	Palm Bay-Melbourne-Titusville MSA	3.7%
11	Pensacola-Ferry Pass-Brent MSA	3.7%
11	Tallahassee MSA	3.7%
16	Jacksonville MSA	3.6%
16	Tampa MD	3.6%
18	Naples-Marco Island MSA	3.5%
18	Panama City-Panama City Beach MSA	3.5%
	Florida	3.5%
20	Orlando-Kissimmee-Sanford MSA	3.4%
20	West Palm Beach-Boca Raton-Delray Beach MD	3.4%
22	Crestview-Fort Walton Beach-Destin MSA	3.3%
22	Fort Lauderdale-Pompano Beach-Sunrise MD	3.3%
22	St. Petersburg-Clearwater-Largo MD	3.3%
25	Miami-Miami Beach-Kendall MD	2.8%

Released: Friday, April 18, 2025

NOTE: All data are subject to revision.

TOTAL NONAGRICULTURAL EMPLOYMENT
FLORIDA (Not Seasonally Adjusted)

Area	March 2025	February 2025	March 2024	Over-the-Month Change		Over-the-Year Change	
				Level	Percent	Level	Percent
Statewide	10,079,700	10,062,900	9,947,100	16,800	0.2%	132,600	1.3%
Cape Coral-Fort Myers MSA	316,800	317,100	319,000	-300	-0.1%	-2,200	-0.7%
Crestview-Fort Walton Beach-Destin MSA	131,700	131,200	130,700	500	0.4%	1,000	0.8%
Deltona-Daytona Beach-Ormond Beach MSA	230,800	230,200	230,000	600	0.3%	800	0.3%
Fort Lauderdale-Pompano Beach-Sunrise Division	932,900	933,400	924,500	-500	-0.1%	8,400	0.9%
Gainesville MSA	169,700	169,300	163,900	400	0.2%	5,800	3.5%
Homosassa Springs MSA	36,400	36,200	36,200	200	0.6%	200	0.6%
Jacksonville MSA	811,700	810,300	801,200	1,400	0.2%	10,500	1.3%
Lakeland-Winter Haven MSA	278,700	277,700	276,100	1,000	0.4%	2,600	0.9%
Miami-Ft. Lauderdale-West Palm Beach MSA	2,994,900	2,991,000	2,963,400	3,900	0.1%	31,500	1.1%
Miami-Miami Beach-Kendall MD	1,354,400	1,351,100	1,333,200	3,300	0.2%	21,200	1.6%
Naples-Marco Island MSA	178,900	178,700	180,400	200	0.1%	-1,500	-0.8%
North Port-Bradenton-Sarasota MSA	356,300	356,100	353,500	200	0.1%	2,800	0.8%
Ocala MSA	124,500	124,500	122,600	0	0.0%	1,900	1.5%
Orlando-Kissimmee-Sanford MSA	1,526,700	1,524,200	1,496,600	2,500	0.2%	30,100	2.0%
Palm Bay-Melbourne-Titusville MSA	261,400	260,800	257,400	600	0.2%	4,000	1.6%
Panama City-Panama City Beach MSA	91,800	91,400	91,300	400	0.4%	500	0.5%
Pensacola-Ferry Pass-Brent MSA	203,100	202,200	201,300	900	0.4%	1,800	0.9%
Port St. Lucie MSA	178,300	177,700	175,400	600	0.3%	2,900	1.7%
Punta Gorda MSA	59,500	59,300	59,700	200	0.3%	-200	-0.3%
St. Petersburg - Clearwater - Largo Division	491,100	487,900	490,000	3,200	0.7%	1,100	0.2%
Sebastian-Vero Beach MSA	59,900	59,700	60,300	200	0.3%	-400	-0.7%
Sebring MSA	28,900	28,800	28,700	100	0.3%	200	0.7%
Tallahassee MSA	205,800	205,500	201,000	300	0.1%	4,800	2.4%
Tampa Division	1,073,400	1,072,900	1,058,800	500	*	14,600	1.4%
Tampa-St. Petersburg-Clearwater MSA	1,564,500	1,560,800	1,548,800	3,700	0.2%	15,700	1.0%
West Palm Beach-Boca Raton-Delray Beach MD	707,600	706,500	705,700	1,100	0.2%	1,900	0.3%
Wildwood-The Villages MSA	41,800	42,100	41,400	-300	-0.7%	400	1.0%

* - less than 0.1 percent

Note: Employment estimates have been rounded to the nearest hundred. Sum of detail may not equal totals due to rounding or the exclusion of some industries from publication. All data are subject to revision. April 18, 2025.

Total Nonagricultural Employment
Florida and Selected Metropolitan Statistical Areas (MSAs) and Metropolitan Divisions (MDs)

Area	Seasonally Adjusted			Over-the-Month		Over-the-Year	
	March ^p	February ^r	March	Change		Change	
	2025	2025	2024	Level	Percent	Level	Percent
Florida	10,050,000	10,031,900	9,915,000	18,100	0.2	135,000	1.4
Cape Coral-Fort Myers MSA	314,600	314,600	314,800	0	0.0	-200	-0.1
Crestview-Fort Walton Beach-Destin MSA	131,700	131,900	130,400	-200	-0.2	1,300	1.0
Deltona-Daytona Beach-Ormond Beach MSA	229,900	229,600	228,400	300	0.1	1,500	0.7
Gainesville MSA	167,800	167,200	163,200	600	0.4	4,600	2.8
Homosassa Springs MSA	36,200	36,100	36,000	100	0.3	200	0.6
Jacksonville MSA	812,300	810,100	802,500	2,200	0.3	9,800	1.2
Lakeland-Winter Haven MSA	277,200	276,400	274,700	800	0.3	2,500	0.9
Miami-Ft. Lauderdale-West Palm Beach MSA	2,993,000	2,987,400	2,954,900	5,600	0.2	38,100	1.3
Fort Lauderdale-Pompano Beach-Sunrise Division	934,400	931,700	923,700	2,700	0.3	10,700	1.2
Miami-Miami Beach-Kendall MD	1,352,800	1,348,600	1,330,900	4,200	0.3	21,900	1.6
West Palm Beach-Boca Raton-Delray Beach MD	705,800	704,500	701,300	1,300	0.2	4,500	0.6
Naples-Marco Island MSA	176,500	176,300	177,300	200	0.1	-800	-0.5
North Port-Bradenton-Sarasota MSA	354,000	353,000	350,700	1,000	0.3	3,300	0.9
Ocala MSA	124,200	124,100	122,300	100	0.1	1,900	1.6
Orlando-Kissimmee-Sanford MSA	1,525,200	1,523,600	1,496,300	1,600	0.1	28,900	1.9
Palm Bay-Melbourne-Titusville MSA	261,300	260,300	257,000	1,000	0.4	4,300	1.7
Panama City-Panama City Beach MSA	92,000	92,000	91,300	0	0.0	700	0.8
Pensacola -Ferry Pass-Brent MSA	202,600	202,400	201,100	200	0.1	1,500	0.7
Port St. Lucie MSA	177,800	177,600	174,500	200	0.1	3,300	1.9
Punta Gorda MSA	59,000	58,700	59,100	300	0.5	-100	-0.2
Sebastian-Vero Beach MSA	59,600	59,400	59,600	200	0.3	0	0.0
Sebring MSA	28,800	28,700	28,200	100	0.3	600	2.1
Tallahassee MSA	204,500	203,600	200,100	900	0.4	4,400	2.2
Tampa - St. Petersburg - Clearwater MSA	1,561,300	1,557,900	1,547,700	3,400	0.2	13,600	0.9
St. Petersburg - Clearwater - Largo Division	488,000	486,600	489,800	1,400	0.3	-1,800	-0.4
Tampa Division	1,071,900	1,070,900	1,057,800	1,000	0.1	14,100	1.3
Wildwood-The Villages MSA	41,600	41,800	41,000	-200	-0.5	600	1.5

Released: April 18, 2025

p = preliminary, r = revised

* - less than 0.1 percent