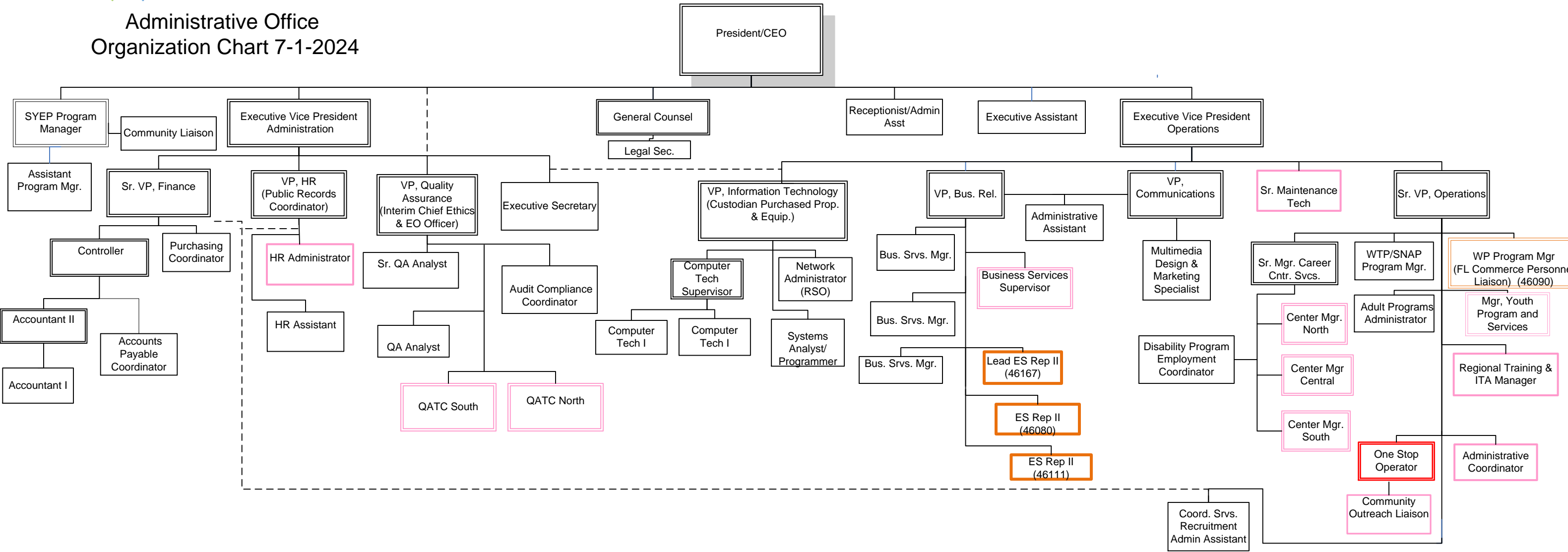




# Administrative Office Organization Chart 7-1-2024

## Broward Workforce Development Board

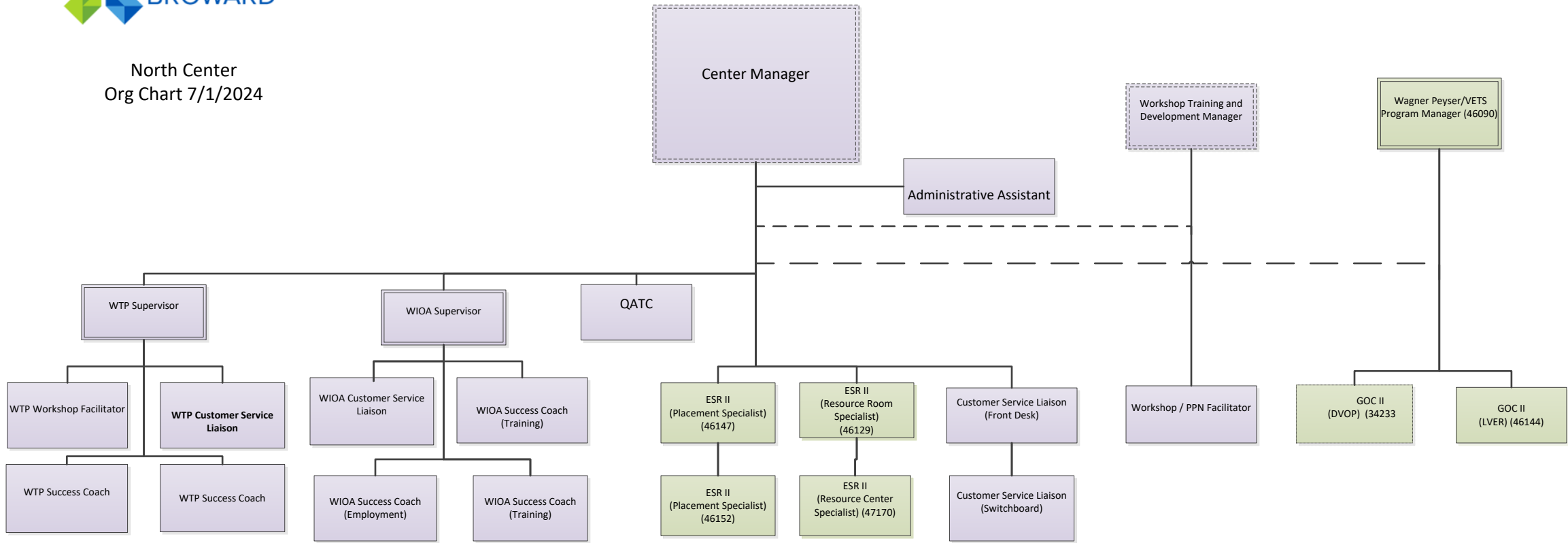
- CSBD
- FL COMMERCE
- Integrative Staffing Group (ISG)
- One Stop Operator (Contract)



**CareerSource Broward**  
**2890 West Cypress Creek Road**  
**Fort Lauderdale, FL 33309**



North Center  
Org Chart 7/1/2024



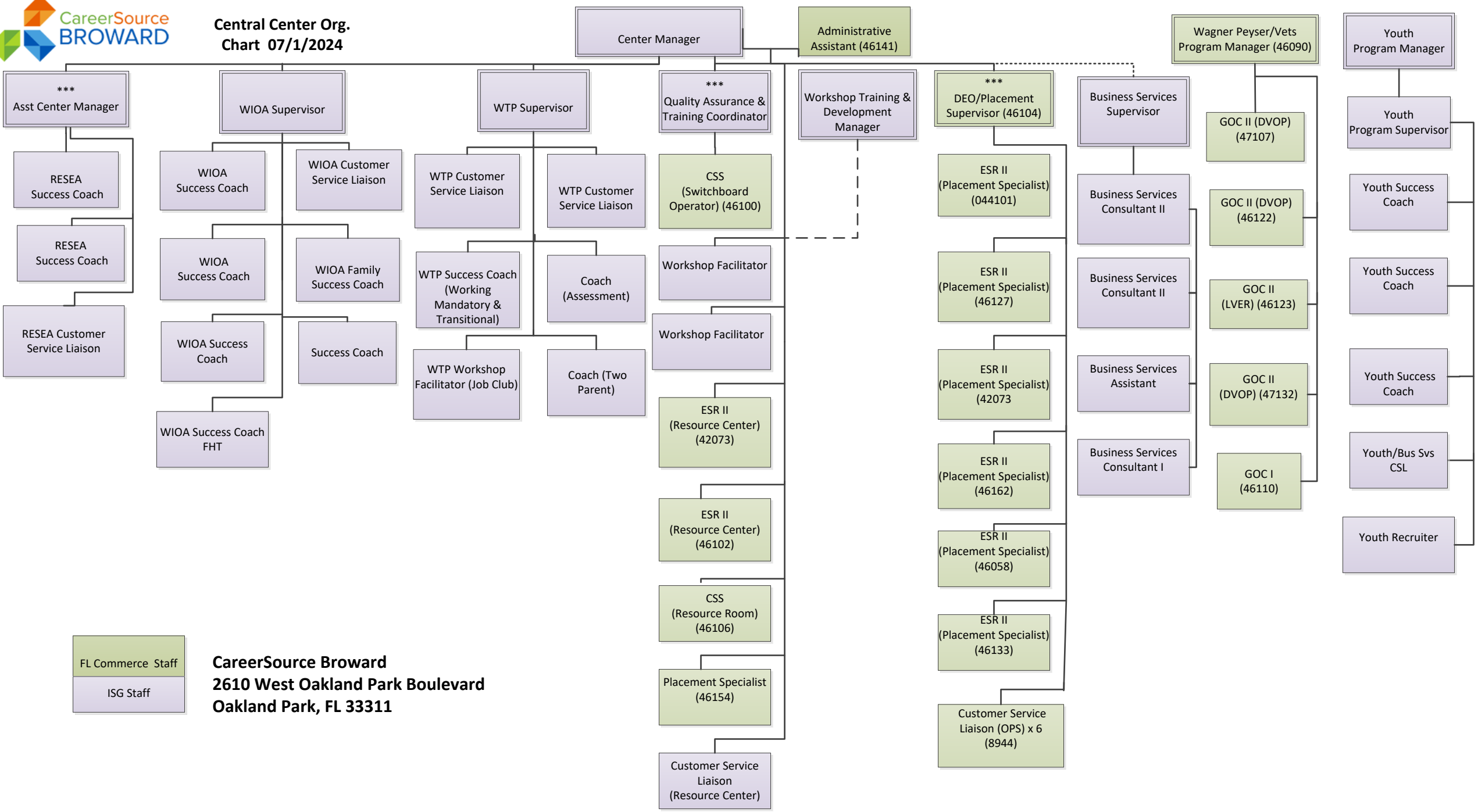
ISG Staff

FL Commerce Staff

CareerSource Broward  
4941 Coconut Creek Parkway  
Coconut Creek, FL 33063



**Central Center Org.  
Chart 07/1/2024**



FL Commerce Staff  
ISG Staff

**CareerSource Broward**  
**2610 West Oakland Park Boulevard**  
**Oakland Park, FL 33311**



**South Center  
Org. Chart 7/1/2024**

**FLCommerce Staff**  
Integrative Staffing Group Staff  
\*\*\* These staff members have access to open and close the building. They have an alarm code .

\*\*\*  
Center Manager

Administrative Assistant (46081)

